

BILL OF MATERIAL DWG. NO. 65-19										
DWG. NO.	LINEAL FEET OF WELD (FILLET)									
	1/8"	3/16"	1/4"	5/16"	3/8"	1/2"	5/8"	3/4"		
512			900	769						
513			1358	909						
514			4352	4437						
515			1740	1176						
516			3497	2354						
517			1740	1176						
518			3025	1565						
519			3900	2411						
520			900	769						
521			1358	909						

TOTAL			22710	16415						
WEIGHT			5692	3931						

TOTAL WEIGHT THIS DWG. 11623
Quot. For ONE BRIDGE

WEIGHT PER L.F.

1/8" = .08"
3/16" = .15"
1/4" = .25"
5/16" = .36"
3/8" = .50"
1/2" = .83"
5/8" = 1.25"
9/16" = 1.60"
3/4" = 1.75"

DRAWN	10-27-65 J.P.F.	CUSTOMER	CALLAHAN BROS. INC.
REVISION		DESIGNER	MAINE S.H.C. BRIDGE DIV.
REVISION		ORDER NO.	VERBAL
REVISION		DWG. NO.	65-19

98-69

SHIP BILL OF MATERIAL DWG. NO. 65-19-515										
MARK	NO.	MARK	SHAPE	LENGTH	WT.	REMARKS				
EP15	8	EXPANSION	PEDESTAL ASSY.							
	8	MP1	R24x3"	2	2					
	8	MP1	R14x3"	2	0					
	8	WP1	R9x4"	0	11 1/2					
	16	PI	R12x1/2"	1	2 1/2					
	16	FB1	3or-5 1/2x1"	0	6					
	8	SP1	R3x4 1/2"	1	0					
	16	shop	1/4" CapScrew	0	8					Field weld to Girder
	16	cl	1 1/2" Rod	0	2 1/2					Mach.
	8	shop	2" Pin	1	2 1/2					w/2 recessed nuts
	16	WI	Bar 4x4	0	8					Washer

EP25	12	EXPANSION	PEDESTAL ASSY.							
	12	MP2	R24x4 1/2"	3	0					
	12	MP2	R12x4"	3	0					
	12	WP2	R17 1/2x4"	1	8 1/4					
	12	SP2	R14x4"	1	6					Field weld to Girders
	24	PI	R10x1/2"	1	8 1/2					
	24	FB2	Bar-5 1/2x1"	1	0					
	24	FB3	Bar-3x1/2"	1	2 1/2					
	12	cl	1 1/2" Rod	0	2 1/2					
	12	shop	2" Pin	2	1 1/2					w/2 recessed nuts
	24	shop	1/4" CapScrew	0	8					Mach.
	24	WI	Bar 4x4	0	8					

AB15	48		1 1/2" Rod	1	8 1/2					
AB15	48		Do	1	10					
FIELD	96	Shop	1/2" 4x Nuts							
			1/2" Std Washers							

P15	8		Rod 2 1/2x8	2	2					Enbco Pad 5A47
P25	16		Do	3	0					Req. No. 8089

NOTE
Allowance to be made for Machining
when cutting above plates.

Pins A.S.T.M. A235 (class E) or A108 (Grade 1021 to 1030)
Anchor Bolts A36 or A307

All Mat A.S.T.M. A36 Unless Noted
STRUCTURAL STEEL ITEM 702-103B
For Details see Dwg. 51

SHOP CONNECTIONS: Welded
FIELD CONNECTIONS: Welded
HOLES: As Noted
PAINT: Red Lead Per Maine Specs.

SOUTHBOUND BRIDGE
PEDESTAL DETAILS
Bancroft & Martin Inc.
South Portland, Maine
I-95 OVER PENOBSCOT RIVER
MEDWAY, MAINE

PROJ. NO.	I-95-9(29)	CUSTOMER	CALLAHAN BROS. INC.
DRAWN	6-24-65 J.P.F.	DESIGNER	MAINE S.H.C. BRIDGE DIV.
REVISION		ORDER NO.	VERBAL
REVISION		DWG. NO.	65-19-515

98-69A

SHIP BILL OF MATERIAL DWG. NO. 65-19-525										
MARK	NO.	MARK	SHAPE	LENGTH	WT.	REMARKS				
DRAS	30		DRAIN	8	8					
DRBS	16		Do	9	4					
DRCS	16		Do	11	3					
	62	PI	REDUCER	0	7					10x6" Std Steel
	30	PO	6" Std Pipe	8	1 1/2					RE-8088
	16	PO	Do	8	9 1/2					
	16	PC	Do	10	8 1/2					
	124	FB1	Bar 1 1/2x2	0	9 1/2					
	124	FB2	Do	0	8 1/2					

715	62		STEMBS	1	11 1/2					No Point
-----	----	--	--------	---	--------	--	--	--	--	----------

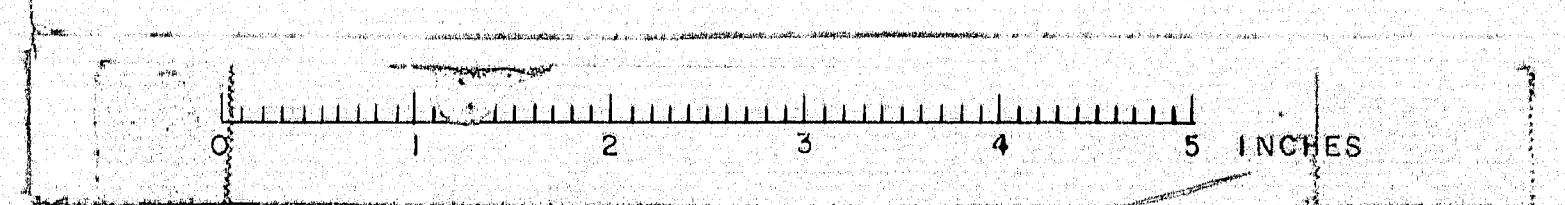
STRUCTURAL STEEL ITEM 702-103B
For Details see Dwg. 52

SHOP CONNECTIONS: Welded
FIELD CONNECTIONS: Welded
HOLES:
PAINT: Red Lead Per Maine Specs.

SOUTHBOUND BRIDGE
DRAIN DETAILS
Bancroft & Martin Inc.
South Portland, Maine
I-95 OVER PENOBSCOT RIVER
MEDWAY, MAINE

PROJ. NO.	I-95-9(29)	CUSTOMER	CALLAHAN BROS. INC.
DRAWN	6-23-65 J.P.F.	DESIGNER	MAINE S.H.C. BRIDGE DIV.
REVISION		ORDER NO.	VERBAL
REVISION		DWG. NO.	65-19-525

98-69B



SHIP BILL OF MATERIAL DWG. NO. 65-195155						
MARK	NO.	MARK	SHAPE	LENGTH	WT.	REMARKS
GIBPS	1		GIRDER	109 1/2	—	
GIBPS	1		Do	109 1/2	—	
	2	hplg	R 96 x 1/2	64 1/2	113	
	2	hplg	Do	44 1/2	113	
	2	hplg	R 42 x 1/2	61 3	113	
	2	hplg	R 28 x 1/2	46 0	113	
	2	hplg	R 19 x 1/2	31 1/2	113	
	2	hplg	Do	31 1/2	113	
	2	hplg	R 28 x 1/2	46 3	113	
	2	hplg	R 19 x 1/2	32 0 3/4	113	
	2	hplg	Do	32 0 3/4	113	
	8	hplg	Bar 7 x 1/2	10 7 1/2	113	
	8	hplg	Do	10 1	113	
	8	hplg	Do	9 2 1/2	113	
	8	hplg	Do	8 9 1/2	113	
	8	hplg	Do	8 1 1/2	113	
	8	hplg	Do	7 10 3/4	113	
	8	hplg	R 13 x 1/2	2 0	113	
	8	hplg	R 8 x 1/2	7 8 1/2	113	
	8	hplg	Do	8 5 1/2	113	
	8	hplg	Do	9 7 1/2	113	
	8	hplg	R 14 x 1/4	11 0 1/2	113	
	8	hplg	Do	11 0 4	113	
	22	hsl	Bar 5 x 3/8	5 7	113	
	10	hsl	Do	5 5 1/2	113	
	2	hsl	Do	5 0 3/4	113	
	2	hsl	Do	5 1 1/2	113	
	9	g8	R 32 x 3/8	0 9 1/2	113	
	9	g8	R 8 x 3/8	1 0 1/2	113	
	9	g12	Bar 7 x 3/8	1 7 1/2	113	
	9	g13	R 8 x 3/8	0 9	113	
	1	g15	Do	1 10 1/2	113	
	8	sp1	R 19 x 3/8	7 3	113	
	2	sp7	R 16 x 3/8	6 6 1/2	113	
	2	sp8	R 18 x 3/8	6 6 1/2	113	
	4	sp9	Bar 7 x 1/2	6 6 1/2	113	
	4	sp10	Do	6 6 1/2	113	
	2	sp11	R 14 x 3/8	6 6 1/2	113	
	2	sp13	R 17 x 3/8	6 6 1/2	113	
	4	sp14	Bar 6 x 1/2	6 6 1/2	113	
	4	sp15	Do	6 6 1/2	113	
FIELD	540		3" H.S. BOLTS	0 2 3/4	113	A.S.T.M. A325 (Weld)
Do	425		Do	0 4 1/4	113	Do (CF43)
Do	965		3" WASHERS	0 4 1/4	113	Do (CF43)
	364	SHOP	3" H.S. BOLTS	0 5	113	ITEM 705-17

All Mat A.S.T.M. A36 Unless Noted
STRUCTURAL STEEL ITEM 702-103B
For Details see DWG. 515

SHOP CONNECTIONS: Welded
FIELD CONNECTIONS: Bolted - Welded
HOLES: 1/8" φ
PAINT: Red Lead Per Maine Specs.

APP. 9-1-65

SOUTHBOUND BRIDGE

GIRDERS @ PIER 1 (INTERIOR)

Pancroft & Martin, Inc.
South Portland, Maine

**I-95 OVER PENOBSCOT RIVER
MEDWAY, MAINE**

CUSTOMER: CALLAHAN BROS. INC.
DESIGNER: MAINE S.H.C. BRIDGE DIV.

ORDER NO. VERBAL DWG. NO. 65-195155

98-69F

SHIP BILL OF MATERIAL DWG. NO. 65-195165						
MARK	NO.	MARK	SHAPE	LENGTH	WT.	REMARKS
GIBPS	1		GIRDER	109 1/2	—	
GIBPS	1		Do	109 1/2	—	
GIBPS	1		Do	109 1/2	—	
	4	hplg	R 96 x 1/2	64 1/2	113	
	4	hplg	Do	44 1/2	113	
	4	hplg	R 42 x 1/2	61 3	113	
	4	hplg	R 28 x 1/2	46 0	113	
	8	hplg	R 19 x 1/2	31 1/2	113	
	4	hplg	R 28 x 1/2	46 3	113	
	8	hplg	R 19 x 1/2	32 0 3/4	113	
	16	hplg	Bar 7 x 1/2	10 7 1/2	113	
	16	hplg	Do	10 1	113	
	16	hplg	Do	9 2 1/2	113	
	16	hplg	Do	8 9 1/2	113	
	16	hplg	Do	8 1 1/2	113	
	16	hplg	Do	7 10 3/4	113	
	16	hplg	R 13 x 1/2	2 0	113	
	16	hplg	R 8 x 1/2	7 8 1/2	113	
	16	hplg	Do	8 5 1/2	113	
	16	hplg	Do	9 7 1/2	113	
	8	hplg	R 14 x 1/4	11 0 1/2	113	
	8	hplg	Do	11 0 4	113	
	44	hsl	Bar 5 x 3/8	5 7	113	
	20	hsl	Do	5 5 1/2	113	
	4	hsl	Do	5 0 3/4	113	
	4	hsl	Do	5 1 1/2	113	
	18	g8	R 32 x 3/8	0 9 1/2	113	
	6	g9	R 8 x 3/8	1 0 1/2	113	
	16	g12	Bar 7 x 3/8	1 7 1/2	113	
	6	g13	R 8 x 3/8	0 9	113	
	2	g15	Do	1 10 1/2	113	
	8	sp1	R 19 x 3/8	7 3	113	
	8	sp12	R 14 x 3/8	6 6 1/2	113	
	8	sp13	R 17 x 3/8	6 6 1/2	113	
	16	sp14	Bar 6 x 1/2	6 6 1/2	113	
	16	sp15	Do	6 6 1/2	113	
FIELD	1080		3" H.S. BOLTS	0 2 3/4	113	A.S.T.M. A325 (Weld)
Do	850		Do	0 4 1/4	113	Do (CF43)
Do	1130		3" WASHERS	0 4 1/4	113	Do (CF43)
	736	SHOP	3" H.S. BOLTS	0 5	113	ITEM 705-17

All Mat A.S.T.M. A36 Unless Noted
STRUCTURAL STEEL ITEM 702-103B
For Details see DWG. 516

SHOP CONNECTIONS: Welded
FIELD CONNECTIONS: Bolted - Welded
HOLES: 1/8" φ
PAINT: Red Lead Per Maine Specs.

APP. 9-1-65

SOUTHBOUND BRIDGE

GIRDERS @ PIER 5 2 1/2 (INTERIOR)

Pancroft & Martin, Inc.
South Portland, Maine

**I-95 OVER PENOBSCOT RIVER
MEDWAY, MAINE**

CUSTOMER: CALLAHAN BROS. INC.
DESIGNER: MAINE S.H.C. BRIDGE DIV.

ORDER NO. VERBAL DWG. NO. 65-195165

98-69G

SHIP BILL OF MATERIAL DWG. NO. 65-195175						
MARK	NO.	MARK	SHAPE	LENGTH	WT.	REMARKS
GIBPS	1		GIRDER	109 1/2	—	
GIBPS	1		Do	109 1/2	—	
	2	hplg	R 96 x 1/2	64 1/2	113	
	2	hplg	Do	44 1/2	113	
	2	hplg	R 42 x 1/2	61 3	113	
	2	hplg	R 28 x 1/2	46 0	113	
	2	hplg	R 19 x 1/2	31 1/2	113	
	2	hplg	Do	31 1/2	113	
	2	hplg	R 28 x 1/2	46 3	113	
	2	hplg	R 19 x 1/2	32 0 3/4	113	
	2	hplg	Do	32 0 3/4	113	
	8	hplg	Bar 7 x 1/2	10 7 1/2	113	
	8	hplg	Do	10 1	113	
	8	hplg	Do	9 2 1/2	113	
	8	hplg	Do	8 9 1/2	113	
	8	hplg	Do	8 1 1/2	113	
	8	hplg	Do	7 10 3/4	113	
	8	hplg	R 13 x 1/2	2 0	113	
	8	hplg	R 8 x 1/2	7 8 1/2	113	
	8	hplg	Do	8 5 1/2	113	
	8	hplg	Do	9 7 1/2	113	
	8	hplg	R 14 x 1/4	11 0 1/2	113	
	8	hplg	Do	11 0 4	113	
	44	hsl	Bar 5 x 3/8	5 7	113	
	10	hsl	Do	5 5 1/2	113	
	2	hsl	Do	5 0 3/4	113	
	2	hsl	Do	5 1 1/2	113	
	9	g8	R 32 x 3/8	0 9 1/2	113	
	9	g8	R 8 x 3/8	1 0 1/2	113	
	9	g12	Bar 7 x 3/8	1 7 1/2	113	
	9	g13	R 8 x 3/8	0 9	113	
	1	g15	Do	1 10 1/2	113	
	8	sp1	R 19 x 3/8	7 3	113	
	2	sp7	R 16 x 3/8	6 6 1/2	113	
	2	sp8	R 18 x 3/8	6 6 1/2	113	
	4	sp9	Bar 7 x 1/2	6 6 1/2	113	
	4	sp10	Do	6 6 1/2	113	
	2	sp11	R 14 x 3/8	6 6 1/2	113	
	2	sp13	R 17 x 3/8	6 6 1/2	113	
	4	sp14	Bar 6 x 1/2	6 6 1/2	113	
	4	sp15	Do	6 6 1/2	113	
FIELD	540		3" H.S. BOLTS	0 2 3/4	113	A.S.T.M. A325 (Weld)
Do	425		Do	0 4 1/4	113	Do (CF43)
Do	965		3" WASHERS	0 4 1/4	113	Do (CF43)
	364	SHOP	3" H.S. BOLTS	0 5	113	ITEM 705-17

All Mat A.S.T.M. A36 Unless Noted
STRUCTURAL STEEL ITEM 702-103B
For Details see DWG. 517

SHOP CONNECTIONS: Welded
FIELD CONNECTIONS: Bolted - Welded
HOLES: 1/8" φ
PAINT: Red Lead Per Maine Specs.

APP. 9-1-65

SOUTHBOUND BRIDGE

GIRDERS @ PIER 4 (INTERIOR)

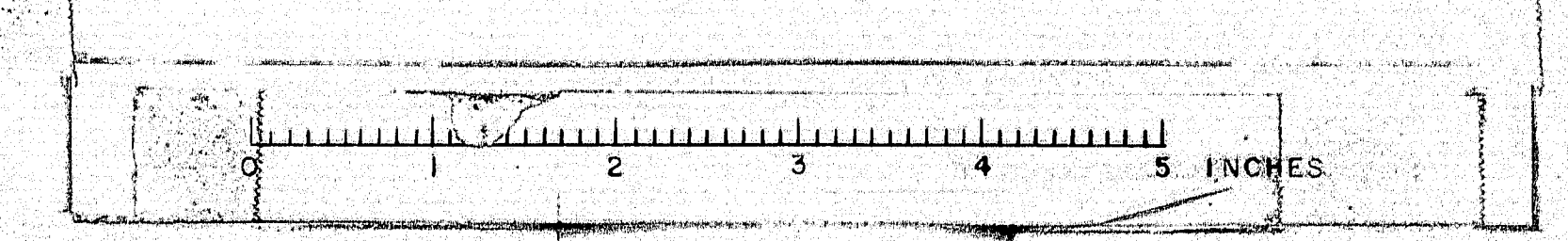
Pancroft & Martin, Inc.
South Portland, Maine

**I-95 OVER PENOBSCOT RIVER
MEDWAY, MAINE**

CUSTOMER: CALLAHAN BROS. INC.
DESIGNER: MAINE S.H.C. BRIDGE DIV.

ORDER NO. VERBAL DWG. NO. 65-195175

98-69H



SHIP		BILL OF MATERIAL				DWG. NO. 65-19-537S
MARK	NO.	MARK	SHAPE	LENGTH	WT.	REMARKS
SDPS	1		ASSEMBLY			
SDPS	1		Do			
	2	p1	R14x3	3 1/4		CHkd R.
	2	p2	R8x3	1 2/3		
	2	b1	Bar 4x3	2 10/16		CHkd R.
	2	b2	R9x3	2 11/16		
	2	b3	R84x3	0 9/16		
	2	b4	Bar 2x3	0 8/8		
	24	b6	Bar 1/2x3	0 11		
	4	b7	Do	1 0		
All Mat A.S.T.M. A36						
STRUCTURAL STEEL ITEM 702-103B						
For Details see DWG. 537						

SHOP CONNECTIONS: Welded
FIELD CONNECTIONS:
HOLES:
PAINT: Red Lead Per Maine Specs

APP 9-10-65

SOUTHBOUND BRIDGE

SIDEWALK DAMS-ABUT #2

Bancroft & Martin Inc.
South Portland, Maine

I-95 OVER PENOBSCOT RIVER
MEDWAY, MAINE

CUSTOMER CALLAHAN BROS. INC.
DESIGNER MAINE S.H.C. BRIDGE DIV.

ORDER NO. VERBAL DWG. NO. 65-19-537S

Prov. No. I-95-9(29)

DRAWN	6-18-65 J.P.F.
REVISION	
REVISION	
REVISION	

98-70

SHIP		BILL OF MATERIAL				DWG. NO. 65-19-531N
MARK	NO.	MARK	SHAPE	LENGTH	WT.	REMARKS
EPIN	8		EXPANSION PEDESTAL ASSY.			
	8	mp1	R24x3	2 2		
	8	cp1	R14x3	2 0		
	8	wp1	R9x4	0 11/16		
	16	p1	R12x1/2	1 2/8		
	16	fb1	Bar 5/8x1	0 6		
	8	sp1	R8x4	1 0		Field weld to Girder
	16	shop	1/4" Cap Screw	0 8		Mech.
	16	dl	1/2" Rod	0 2 1/2		
	8	shop	2" Pin	1 2 1/2		w/2 recessed nuts
	16	w1	Bar 4x4	0 8		R Washer
EP2N	12		EXPANSION PEDESTAL ASSY.			
	12	mp2	R24x4	3 0		
	12	cp2	R12x4	3 0		
	12	wp2	R17x4	1 8/4		
	12	sp2	R14x4	1 6		Field weld to Girders
	24	p2	R10x1/2	1 8 1/2		
	24	fb2	Bar 5/8x1	1 0		
	24	fb3	Bar 3x1/2	1 2 3/4		
	24	dl	1/2" Rod	0 2 1/2		
	12	shop	2" Pin	2 1 1/2		w/2 recessed nuts
	24	shop	1/4" Cap Screw	0 8		Mech.
	24	w1	Bar 4x4	0 8		
EPIN	4		FIXED PEDESTAL ASSY.			
	4	mp3	R24x3	3 0		
	4	wp3	R204x4	1 10		
	4	sp3	R14x4	1 6		Field weld to Girder
	8	p3	R22x1/2	2 0 3/4		
	8	p4	R9x1/2	1 7		
	8	fb2	Bar 5/8x1	1 0		
	4	shop	2" Pin	2 1 1/2		w/2 Recessed nuts
ABIN	48		1/2" Rod	1 8 3/4		
ABIN	48		Do	1 10		
	96	shop	1/2" Hex Nuts			
FIELD	96		1/2" Std Washers			
PIN	8		Rd 24x6	2 2		Fabco Rod SA47
P2N	16		Do	3 0		Req. No. 8089
Note: Allowance to be made for Machining when cutting above plates.						
Pins A.S.T.M. A235 (class E) or A108 (Grade 1021 to 1030)						
Anchor Bolts A36 or A307						
All Mat A.S.T.M. A36 Unless Noted						
STRUCTURAL STEEL ITEM 702-103B						
For Details see DWG. 51						

SHOP CONNECTIONS: Welded
FIELD CONNECTIONS: Welded
HOLES: As Noted
PAINT: Red Lead Per Maine Specs

APP 9-2-65

NORTHBOUND BRIDGE

PEDESTAL DETAILS

Bancroft & Martin Inc.
South Portland, Maine

I-95 OVER PENOBSCOT RIVER
MEDWAY, MAINE

CUSTOMER CALLAHAN BROS. INC.
DESIGNER MAINE S.H.C. BRIDGE DIV.

ORDER NO. VERBAL DWG. NO. 65-19-531N

Prov. No. I-95-9(29)

DRAWN	6-24-65 J.P.F.
REVISION	
REVISION	
REVISION	

98-70A

SHIP		BILL OF MATERIAL				DWG. NO. 65-19-52N
MARK	NO.	MARK	SHAPE	LENGTH	WT.	REMARKS
DRAN	30		DRAIN	8 8		
DRBN	16		Do	9 4		
DRCN	16		Do	11 3		
	62	F1	REDUCER	0 7		10x6" Std Steel
	30	pa	6" Std Pipe	8 1/2		Req. 8088
	16	pb	Do	8 9/16		
	16	pc	Do	10 8/16		
	124	fb1	Bar 1/2x2	0 9 1/8		
	124	fb2	Do	0 8 1/8		
TIN	62		STGWB5	1 11/16		No Point
STRUCTURAL STEEL ITEM 702-103B						
For Details see DWG. 52						

SHOP CONNECTIONS: Welded
FIELD CONNECTIONS: Welded
HOLES:
PAINT: Red Lead Per Maine Specs

APP 9-2-65

NORTHBOUND BRIDGE

DRAIN DETAILS

Bancroft & Martin Inc.
South Portland, Maine

I-95 OVER PENOBSCOT RIVER
MEDWAY, MAINE

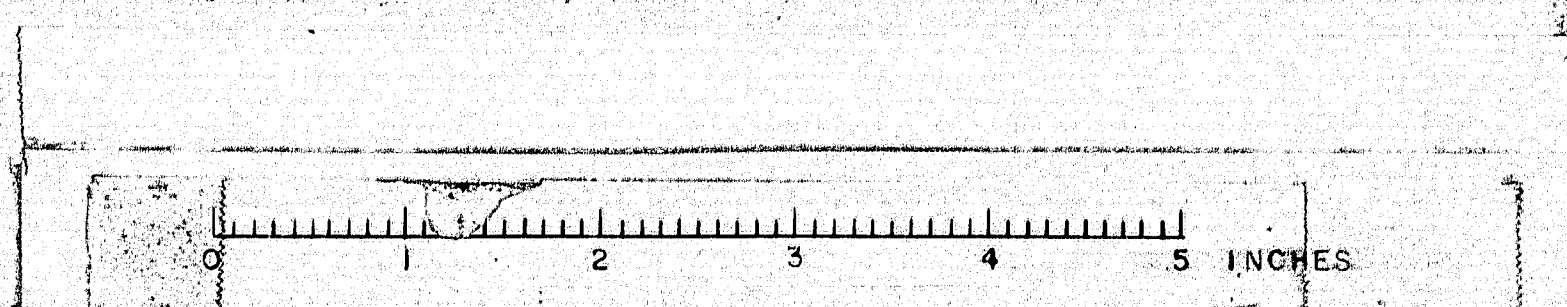
CUSTOMER CALLAHAN BROS. INC.
DESIGNER MAINE S.H.C. BRIDGE DIV.

ORDER NO. VERBAL DWG. NO. 65-19-52N

Prov. No. I-95-9(29)

DRAWN	6-23-65 J.P.F.
REVISION	
REVISION	
REVISION	

98-70B



SHIP BILL OF MATERIAL DWG. NO. 65-19-S12N						
MARK	NO.	MARK	SHAPE	LENGTH	WT.	REMARKS
GIAN	1		GIRDER	125.8 1/2	-	
GIDN	1		Do	125.8 1/2	-	
	2	WP1	R 9 1/2 x 1 1/2	65	7	
	2	WP2	R 9 3/4 x 1 1/2	60	1 1/2	
	2	TP1	R 14 x 3/4	40	7.8	
	2	TP2	R 14 x 1"	55	0 3/4	
	2	TP3	R 14 x 3/4	29	1 1/8	
	2	BP1	R 16 x 1 1/2	40	7	
	2	BP2	R 20 x 1 1/2	55	0 3/4	
	2	BP3	R 16 x 1 1/2	29	1 1/8	
	22	S1	Bar 7 x 1 1/2	7	3	
	2	S2	Bar 7 x 3/4	7	3 1/4	
	2	S3	R 8 x 3/4	7	3 1/4	
	8	S6	R 8 x 1/2	7	3	
	2	S6a	Do	7	3 1/4	
	2	H1	Bar 7 x 1 1/2	7	4	
	2	H2	Do	7	5 1/2	
	6	G1	R 8 x 3/4	1	2	
	5	G4	Do	0	11	
	2	SP6	R 14 x 3/4	4	9 1/8	

28 SHOP 3/8" U.S. BOLTS 0 3 A.S.T.M. A325
28 Do 3/8" HARD WASHERS.

668 SHOP 7/8" NELSON STUDS 0 5 ITEM 705-17

ALL MATERIAL A.S.T.M. A36 Unless Noted
STRUCTURAL STEEL ITEM 705-103B
For Details see DWG. 512

SHOP CONNECTIONS: Welded-Bolted
FIELD CONNECTIONS: Bolted-Welded
HOLES: 1 1/2"
PAINT: Red Lead Per Maine Specs

NORTHBOUND BRIDGE
SPAN I
GIRDERS (EXTERIOR)
Parrish & Martin Inc.
South Portland & Maine
I-95 OVER PENOBSCOT RIVER
MEDWAY, MAINE

Proj. No. I-95-9(29)
DRAWN 3-25-65 J.P.F.
REVISION
DESIGNER MAINE S.H.C. BRIDGE CO.
ORDER NO. VERBAL DWG. NO. 65-19-S12N

98-70C

SHIP BILL OF MATERIAL DWG. NO. 65-19-S13N						
MARK	NO.	MARK	SHAPE	LENGTH	WT.	REMARKS
GIBN	1		GIRDER	125.8 1/2	-	
GICN	1		Do	125.8 1/2	-	
	2	WP1	R 9 1/2 x 1 1/2	65	7	
	2	WP2	R 9 3/4 x 1 1/2	60	1 1/2	
	2	TP1	R 16 x 3/4	35	7.8	
	2	TP5	R 16 x 1 1/2	65	0 3/4	
	2	TP6	R 16 x 3/4	24	1 1/8	
	2	BP4	R 19 x 1 1/2	35	7	
	2	BP5	R 25 x 1 1/2	65	0 3/4	
	2	BP6	R 19 x 1 1/2	24	1 1/8	
	44	S1	Bar 7 x 1 1/2	7	3	
	4	S4	R 9 x 3/4	7	3 1/4	
	16	S6	R 8 x 3/4	7	3	
	4	S6a	Do	7	3 1/4	
	4	H1	Bar 7 x 1 1/2	7	4	
	4	H2	Do	7	5 1/2	
	9	G2	R 8 x 3/4	0	11	
	3	G3	Do	1	2 1/2	
	9	G5	Do	1	1 1/2	
	3	G6	Do	0	9	
	2	SP11	R 16 x 3/4	5	3 3/8	

32 SHOP 3/8" U.S. BOLTS 0 3 A.S.T.M. A325
32 Do 3/8" HARD WASHERS

668 SHOP 7/8" NELSON STUDS 0 5 ITEM 705-17

ALL MATERIAL A.S.T.M. A36 Unless Noted
STRUCTURAL STEEL ITEM 705-103B
For Details see DWG. 513

SHOP CONNECTIONS: Welded-Bolted
FIELD CONNECTIONS: Bolted-Welded
HOLES: 1 1/2"
PAINT: Red Lead Per Maine Specs

NORTHBOUND BRIDGE
SPAN I
GIRDERS (INTERIOR)
Parrish & Martin Inc.
South Portland & Maine
I-95 OVER PENOBSCOT RIVER
MEDWAY, MAINE

Proj. No. I-95-9(29)
DRAWN 3-25-65 J.P.F.
REVISION
DESIGNER MAINE S.H.C. BRIDGE CO.
ORDER NO. VERBAL DWG. NO. 65-19-S13N

98-70D

SHIP BILL OF MATERIAL DWG. NO. 65-19-S14N						
MARK	NO.	MARK	SHAPE	LENGTH	WT.	REMARKS
GIAN	1		GIRDER	109 1/2	-	
GIDN	1		Do	109 1/2	-	
GAPN	1		Do	109 1/2	-	
GAPN	1		Do	109 1/2	-	
GIDN	1		Do	109 1/2	-	
GIDN	1		Do	109 1/2	-	
GIDN	1		Do	109 1/2	-	
GIDN	1		Do	109 1/2	-	
	8	WP1	R 9 1/2 x 1 1/2	62 1/2	7	
	8	WP2	R 9 3/4 x 1 1/2	61 1/2	1 1/2	
	8	TP1	R 22 x 1 1/2	46	0	
	8	TP2	R 16 x 1 1/2	31	1 1/8	
	8	BP1	R 22 x 1 1/2	46	3	
	16	BP2	R 16 x 1 1/2	32	0 3/4	
	16	BP3	R 10 x 1"	11	0 1/4	
	16	BP4	Bar 7 x 1 1/2	10	7 1/2	
	16	BP5	Do	10	1	
	16	BP6	Do	9	2 1/2	
	16	BP7	Do	8	9 1/2	
	16	BP8	Do	8	1 1/2	
	16	BP9	Do	7	10 1/2	
	32	WP3	R 10 x 3/4	2	0	
	16	S5	R 8 x 1/2	7	3 1/2	
	16	S7	Do	8	5 1/2	
	16	S7a	Do	9	7 1/2	
	8	S8	R 11 x 1"	11	0 1/4	
	8	S9	Do	11	0 1/4	
	8	H3	Bar 5 x 3/4	5	7	
	40	H5	Do	5	5 1/2	
	8	H5a	Do	5	0 3/4	
	8	H5b	Do	5	1 1/2	
	4	G1	R 8 x 3/4	1	2	
	4	G4	Do	0	11	
	20	G7	Do	1	0 1/2	
	4	G10	R 11 x 3/4	0	11 1/2	
	20	G11	R 9 x 3/4	0	10	
	4	G14	R 10 x 3/4	1	2 1/2	
	32	SP1	R 19 x 3/4	7	5	
	16	SP2	R 14 x 3/4	6	0 1/2	
	16	SP3	R 16 x 3/4	6	0 1/2	
	32	SP4	Bar 6 x 3/4	6	0 1/2	
	32	SP5	Do	6	0 1/2	

FIELD 2154 3/8" U.S. BOLTS 0 2 1/2 A.S.T.M. A325 (P.W.B.) - 1 1/2"
Do 1566 Do 0 4 1/2 Do (C.F.P.) - 1 1/2"
Do 3720 3/8" HARD WASHERS

1464 SHOP 7/8" NELSON STUDS 0 5 ITEM 705-17

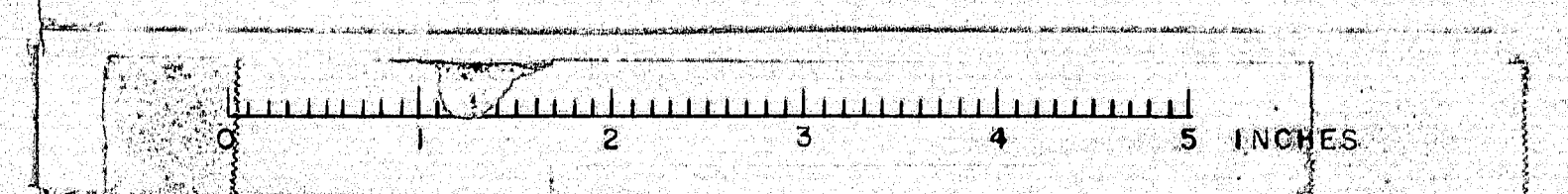
ALL MATERIAL A.S.T.M. A36 Unless Noted
STRUCTURAL STEEL ITEM 705-103B
For Details see DWG. 514

SHOP CONNECTIONS: Welded
FIELD CONNECTIONS: Bolted-Welded
HOLES: 1 1/2"
PAINT: Red Lead Per Maine Specs

NORTHBOUND BRIDGE
GIRDERS @ Piers 1, 2, 3 & 4
(EXTERIOR)
Parrish & Martin Inc.
South Portland & Maine
I-95 OVER PENOBSCOT RIVER
MEDWAY, MAINE

Proj. No. I-95-9(29)
DRAWN 3-26-65 J.P.F.
REVISION
DESIGNER MAINE S.H.C. BRIDGE CO.
ORDER NO. VERBAL DWG. NO. 65-19-S14N

98-70E



SHIP BILL OF MATERIAL DWG. NO. 6519-S18N						
MARK	NO.	MARK	SHAPE	LENGTH	WT.	REMARKS
G2AN	1		GIRDER	119'11 1/8"	—	
G1DN	1		Do	119'11 1/8"	—	
G3AN	1		Do	119'11 1/8"	—	
G3DN	1		Do	119'11 1/8"	—	
G4AN	1		Do	119'11 1/8"	—	
G4DN	1		Do	119'11 1/8"	—	
	6	WP3	R 93 x 1/2	55'0"		
	6	WP4	Do	64'11 1/8"		
	6	TP12	R 14 x 3/4	64'11 1/8"		
	6	TP13	Do	55'0"		
	12	BP12	R 16 x 1/2	34'11 1/8"		
	6	BP13	R 20 x 1/2	50'0"		
	48	S1	Bar 7 x 1/2	7'3"		
	18	S6	R 8 x 2	7'3"		
	12	S6a	Do	7'3 1/4"		
	12	H1	Bar 7 x 1/2	7'4"		
	12	H2	Do	7'5 1/2"		
	15	G1	R 8 x 3/8	1'2"		
	15	G4	Do	0'11"		
	12	SP6	R 14 x 3/4	4'9 3/8"		
	168	SHOP	7/8" H.S. BOLTS	0'3"		A.S.T.M. A325
	168	Do	3/4" HARD WASHERS			
	2028	SHOP	7/8" NELSON STUDS	0'5"		ITEM 705-17

ALL MATERIAL A.S.T.M. A36 Unless Noted
 STRUCTURAL STEEL ITEM 702-103B
 For Details see Dwg. 518

SHOP CONNECTIONS: Welded-Bolted
 FIELD CONNECTIONS: Bolted-Welded
 HOLES: 1/8"
 PAINT: Red Lead Per Maine Specs

APP 9-1-65

NORTHBOUND BRIDGE
 GIRDERS SPANS 2-3 & 4
 (EXTERIOR)

Pannocraft & Martin, Inc.
 South Portland 2, Maine

I-95 OVER PENOBSCOT RIVER
 MEDWAY, MAINE

CUSTOMER CALLAHAN BROS. INC.
 DESIGNER MAINE S.H.C. BRIDGE CO.

PROV. NO. I-95-9(27)
 DRAWN 3-30-65 J.P.R.
 REVISION
 REVISION
 REVISION

ORDER NO. VERBAL DWG. NO. 6519-S18N

98-701

SHIP BILL OF MATERIAL DWG. NO. 6519-S19N						
MARK	NO.	MARK	SHAPE	LENGTH	WT.	REMARKS
G2BN	1		GIRDER	119'11 1/8"	—	
G2CN	1		Do	119'11 1/8"	—	
G3BN	1		Do	119'11 1/8"	—	
G3CN	1		Do	119'11 1/8"	—	
G4BN	1		Do	119'11 1/8"	—	
G4CN	1		Do	119'11 1/8"	—	
	6	WP3	R 93 x 1/2	55'0"		
	6	WP4	Do	64'11 1/8"		
	12	TP14	R 14 x 3/4	29'11 1/8"		
	6	TP15	R 14 x 1"	60'0"		
	12	BP14	R 19 x 1/2	29'11 1/8"		
	6	BP15	R 25 x 1/2	60'0"		
	96	S1	Bar 7 x 1/2	7'3"		
	36	S6	R 8 x 2	7'3"		
	24	S6a	Do	7'3 1/4"		
	24	H1	Bar 7 x 1/2	7'4"		
	24	H2	Do	7'5 1/2"		
	27	G2	R 8 x 3/8	0'11"		
	9	G3	Do	1'2 1/2"		
	27	G5	Do	1'1 1/2"		
	9	G6	Do	0'9"		
	12	SP16	R 14 x 3/4	5'3 3/8"		
	192	SHOP	7/8" H.S. BOLTS	0'3"		A.S.T.M. A325
	192	Do	3/4" HARD WASHERS			
	2028	SHOP	7/8" NELSON STUDS	0'5"		ITEM 705-17

ALL MATERIAL A.S.T.M. A36 Unless Noted
 STRUCTURAL STEEL ITEM 702-103B
 For Details see Dwg. 519

SHOP CONNECTIONS: Welded-Bolted
 FIELD CONNECTIONS: Bolted-Welded
 HOLES: 1/8"
 PAINT: Red Lead Per Maine Specs

APP 9-1-65

NORTHBOUND BRIDGE
 GIRDERS SPANS 2-3 & 4
 (INTERIOR)

Pannocraft & Martin, Inc.
 South Portland 2, Maine

I-95 OVER PENOBSCOT RIVER
 MEDWAY, MAINE

CUSTOMER CALLAHAN BROS. INC.
 DESIGNER MAINE S.H.C. BRIDGE CO.

PROV. NO. I-95-9(27)
 DRAWN 3-31-65 J.P.R.
 REVISION
 REVISION
 REVISION

ORDER NO. VERBAL DWG. NO. 6519-S19N

98-70J

SHIP BILL OF MATERIAL DWG. NO. 6519-S20N						
MARK	NO.	MARK	SHAPE	LENGTH	WT.	REMARKS
G5AN	1		GIRDER	125'5 1/8"	—	
G5DN	1		Do	125'5 1/8"	—	
	2	WP5	R 93 x 1/2	59'10 1/8"		
	2	WP6	R 91 x 1/2	65'7"		
	2	TP3	R 14 x 3/4	29'11 1/8"		
	2	TP16	R 14 x 1"	54'11 1/8"		
	2	TP17	R 14 x 3/4	40'5 3/8"		
	2	BP3	R 16 x 1/2	29'11 1/8"		
	2	BP16	R 20 x 1/2	54'11 1/8"		
	2	BP17	R 16 x 1/2	40'6"		
	22	S1	Bar 7 x 1/2	7'3"		
	2	S2	Bar 7 x 3/4	7'3 1/4"		
	2	S3	R 8 x 3/4	7'3 1/4"		
	8	S6	R 8 x 2	7'3"		
	2	S6a	Do	7'3 1/4"		
	2	H1	Bar 7 x 1/2	7'4"		
	2	H2	Do	7'5 1/2"		
	5	G1	R 8 x 3/8	1'2"		
	6	G4	Do	0'11"		
	2	SP6	R 14 x 3/4	4'9 3/8"		
	28	SHOP	7/8" H.S. BOLTS	0'3"		A.S.T.M. A325
	28	Do	3/4" HARD WASHERS			
	668	SHOP	7/8" NELSON STUDS	0'5"		ITEM 705-17
	FIELD 500		5/8" CARR. BOLTS	0'14"		

ALL MATERIAL A.S.T.M. A36 Unless Noted
 STRUCTURAL STEEL ITEM 702-103B
 For Details see Dwg. 520

SHOP CONNECTIONS: Welded-Bolted
 FIELD CONNECTIONS: Bolted-Welded
 HOLES: 1/8"
 PAINT: Red Lead Per Maine Specs

APP 9-1-65

NORTHBOUND BRIDGE
 GIRDERS SPANS 5
 (EXTERIOR)

Pannocraft & Martin, Inc.
 South Portland 2, Maine

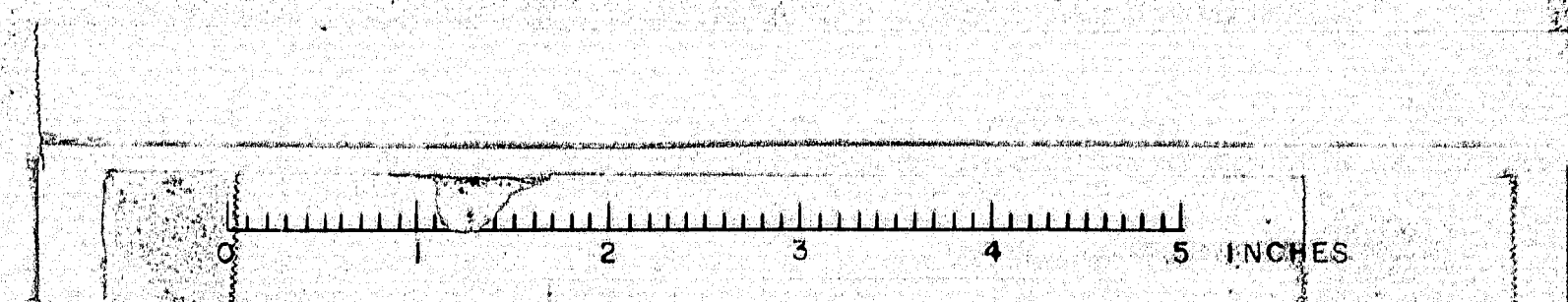
I-95 OVER PENOBSCOT RIVER
 MEDWAY, MAINE

CUSTOMER CALLAHAN BROS. INC.
 DESIGNER MAINE S.H.C. BRIDGE CO.

PROV. NO. I-95-9(27)
 DRAWN 4-1-65 J.P.R.
 REVISION 9-7-65 J.P.R.
 REVISION
 REVISION

ORDER NO. VERBAL DWG. NO. 6519-S20N

98-70K



SHIP		BILL OF MATERIAL				DWG. NO.
MARK	NO.	MARK	SHAPE	LENGTH	WT.	REMARKS
558N	1		GIRDER	125.5	—	
558N	1		Do	125.5	—	
	2	WPS	R93x $\frac{3}{4}$	59.10		
	2	WPS	R91x $\frac{3}{4}$	65.7		
	2	TPG	R16x $\frac{3}{4}$	24.11		
	2	TPB	R16x $\frac{3}{4}$	64.11		
	2	TP9	R16x $\frac{3}{4}$	35.58		
	2	BP6	R19x $\frac{3}{4}$	24.11		
	2	BPB	R25x $\frac{3}{4}$	64.11		
	2	BP9	R19x $\frac{3}{4}$	35.6		
	44	S1	Bar 7x $\frac{1}{2}$	7.3		
	4	S4	R9x $\frac{3}{4}$	7.34		
	16	SG	R8x $\frac{1}{2}$	7.3		
	4	S6a	Do	7.34		
	4	H1	Bar 7x $\frac{1}{2}$	7.4		
	4	H2	Do	7.5		
	9	G2	R8x $\frac{3}{4}$	0.11		
	3	G3	Do	1.22		
	9	G5	Do	1.16		
	3	G6	Do	0.9		
	2	SP11	R16x $\frac{3}{4}$	5.58		
	32	SHOP	8" H.S. BOLTS	0.3		A5-TM. A325
	32	Do	8" WASHERS			
	668	SHOP	8" WELSON STUDS	0.5		ITEM 705-17

All Mat. A.S.T.M. A36 Unless Noted
 STRUCTURAL STEEL ITEM 702-03B
 For Details see Dwg. 521

SHOP CONNECTIONS: Welded - Bolted
 FIELD CONNECTIONS: Bolted - Welded
 HOLES: $\frac{1}{8}$ "
 PAINT: Red Lead Per Maine Specs

APP. 9-1-65

NORTHBOUND BRIDGE	
GIRDERS SPAN 5 (INTERIOR)	
Parrish & Martin, Inc. South Portland & Maine	
I-95 OVER PENOBSCOT RIVER MEDWAY, MAINE	
CUSTOMER	CALLAHAN BROS. INC.
DESIGNER	MAINE S.H.C. BRIDGE DIV.
ORDER NO.	VERBAL
DWG. NO.	65-19-521N

Prov. No. I-95-9(27)
 DRAWN 4-1-65 J.P.R.
 REVISION
 REVISION
 REVISION

98-70L

SHIP		BILL OF MATERIAL				DWG. NO.
MARK	NO.	MARK	SHAPE	LENGTH	WT.	REMARKS
A1A	2		FRAME	9.11	—	
	2	C1	15L33.9	9.11		
	2	P1	R9x $\frac{3}{4}$	8.11		
	2	Q1	L5x5x $\frac{3}{8}$	9.11		
	2	Q2R	L5x3 $\frac{1}{2}$ x $\frac{3}{8}$	6.84		
	2	Q2L	Do	6.7		

All Mat. A.S.T.M. A36
 STRUCTURAL STEEL ITEM 702-03B
 For Details see Dwg. 523

SHOP CONNECTIONS: Welded
 FIELD CONNECTIONS: Bolted - Welded
 HOLES: $\frac{1}{8}$ "
 PAINT: Red Lead Per Maine Specs

APP. 9-1-65

NORTHBOUND BRIDGE	
CROSS FRAME - A1A	
Parrish & Martin, Inc. South Portland & Maine	
I-95 OVER PENOBSCOT RIVER MEDWAY, MAINE	
CUSTOMER	CALLAHAN BROS. INC.
DESIGNER	MAINE S.H.C. BRIDGE DIV.
ORDER NO.	VERBAL
DWG. NO.	65-19-523N

Prov. No. I-95-9(27)
 DRAWN 4-1-65 J.P.R.
 REVISION
 REVISION
 REVISION

98-70M

SHIP		BILL OF MATERIAL				DWG. NO.
MARK	NO.	MARK	SHAPE	LENGTH	WT.	REMARKS
A1B	2		FRAME	9.10	—	
	2	C2	15L33.9	9.10		
	2	P2	R9x $\frac{3}{4}$	8.10		
	2	Q3	L5x5x $\frac{3}{8}$	9.10		
	2	Q4R	L5x3 $\frac{1}{2}$ x $\frac{3}{8}$	6.74		
	2	Q4L	Do	6.72		

All Mat. A.S.T.M. A36
 STRUCTURAL STEEL ITEM 702-03B
 For Details see Dwg. 524

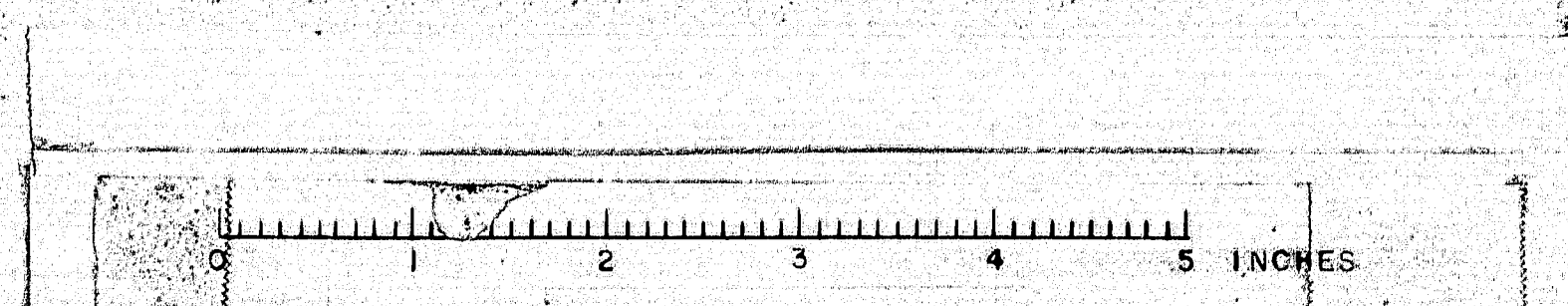
SHOP CONNECTIONS: Welded
 FIELD CONNECTIONS: Bolted - Welded
 HOLES: $\frac{1}{8}$ "
 PAINT: Red Lead Per Maine Specs

APP. 9-1-65

NORTHBOUND BRIDGE	
CROSS FRAME - A1B	
Parrish & Martin, Inc. South Portland & Maine	
I-95 OVER PENOBSCOT RIVER MEDWAY, MAINE	
CUSTOMER	CALLAHAN BROS. INC.
DESIGNER	MAINE S.H.C. BRIDGE DIV.
ORDER NO.	VERBAL
DWG. NO.	65-19-524N

Prov. No. I-95-9(27)
 DRAWN 4-1-65 J.P.R.
 REVISION
 REVISION
 REVISION

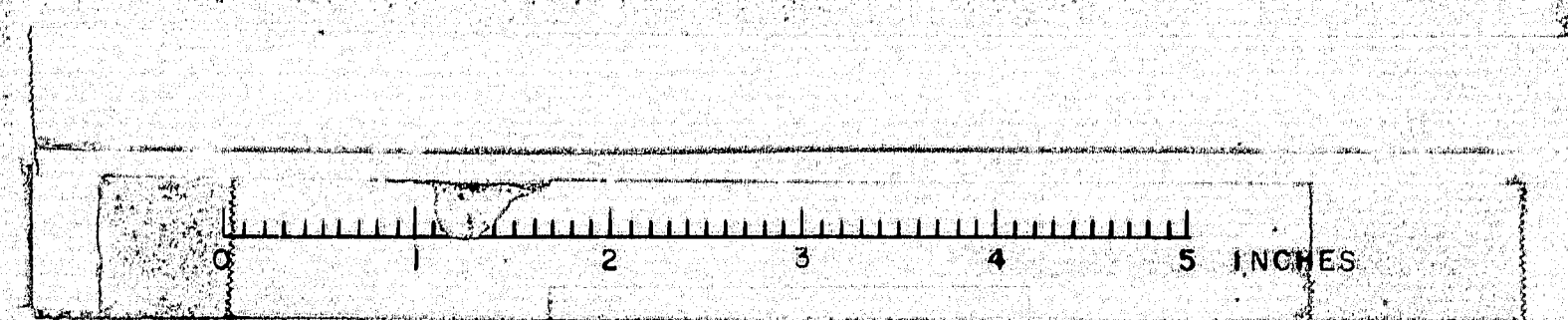
98-70N



98-70-0

98-70P

98-700



SHIP BILL OF MATERIAL						DWG. NO. 65-19-528N
MARK	NO.	MARK	SHAPE	LENGTH	WT.	REMARKS
A2CN	8		FRAME	9 1/8	—	
	8	C3	15L33.9	9 1/8		
	8	P3	R9x3	8 1/8		
	8	06	4.5x5x1/2	9 1/8		
	8	29R	4.5x3x1/2	6 1/2		
	8	29L	Do	7 1/2		
FIELD 100		3rd	M. Bolts	0 1/2		@ Frames A2

All Weld A. S. T. M. A36
STRUCTURAL STEEL ITEM 102-103B
For Details see Dwg. 528

SHOP CONNECTIONS: Welded
FIELD CONNECTIONS: Bolted-Welded
HOLES: 1/8"
PAINT: Red Lead Per Maine Specs

APR 9-1-65

NORTHBOUND BRIDGE	
CROSS FRAME - A2C	
Bancroft & Martin Inc. South Portland & Maine	
I-95 OVER PENOBSCOT RIVER MEDWAY, MAINE	
CUSTOMER GALLAHAN BROS. INC. DESIGNER MAINE S.H.C. BRIDGES DIV.	
ORDER NO. VERBAL	DWG. NO. 65-19-528N

Prov. No. I-95-9(27)

DRAWN	4-14-65 JPR
REVISION	
REVISION	
REVISION	

98-70R

SHIP BILL OF MATERIAL						DWG. NO. 65-19-529N
MARK	NO.	MARK	SHAPE	LENGTH	WT.	REMARKS
B1AN	25		32x32x1/2	11 4/8		
B1BN	25		Do	11 6/8		
B1CN	25		Do	11 5/8		
B1DN	25		Do	11 5/8		
B1EN	25		Do	11 6/8		
B1FN	25		Do	11 4/8		
B1N	75		4.5x5x1/2	9 1/8		
	75	f61	Bar 4x2x2	0 9		

All Weld A. S. T. M. A36
STRUCTURAL STEEL ITEM 102-103B
For Details see Dwg. 529

SHOP CONNECTIONS: Welded
FIELD CONNECTIONS: Bolted-Welded
HOLES: 1/8"
PAINT: Red Lead Per Maine Specs

APR 9-1-65

NORTHBOUND BRIDGE	
CROSS FRAME - TYPE B1	
Bancroft & Martin Inc. South Portland & Maine	
I-95 OVER PENOBSCOT RIVER MEDWAY, MAINE	
CUSTOMER GALLAHAN BROS. INC. DESIGNER MAINE S.H.C. BRIDGES DIV.	
ORDER NO. VERBAL	DWG. NO. 65-19-529N

Prov. No. I-95-9(27)

DRAWN	4-14-65 JPR
REVISION	
REVISION	
REVISION	

98-70S

SHIP BILL OF MATERIAL						DWG. NO. 65-19-530N
MARK	NO.	MARK	SHAPE	LENGTH	WT.	REMARKS
B2AN	8		32x32x1/2	11 10/16		
B2BN	8		Do	12 1/16		
B2CN	8		Do	12 0/16		
B2DN	8		Do	12 0/16		
B2EN	8		Do	12 1/16		
B2FN	8		Do	11 10/16		
B2N	24		4.5x5x1/2	9 1/8		
	24	f61	Bar 4x2x2	0 9		

All Weld A. S. T. M. A36
STRUCTURAL STEEL ITEM 102-103B
For Details see Dwg. 530

SHOP CONNECTIONS: Welded
FIELD CONNECTIONS: Bolted-Welded
HOLES: 1/8"
PAINT: Red Lead Per Maine Specs

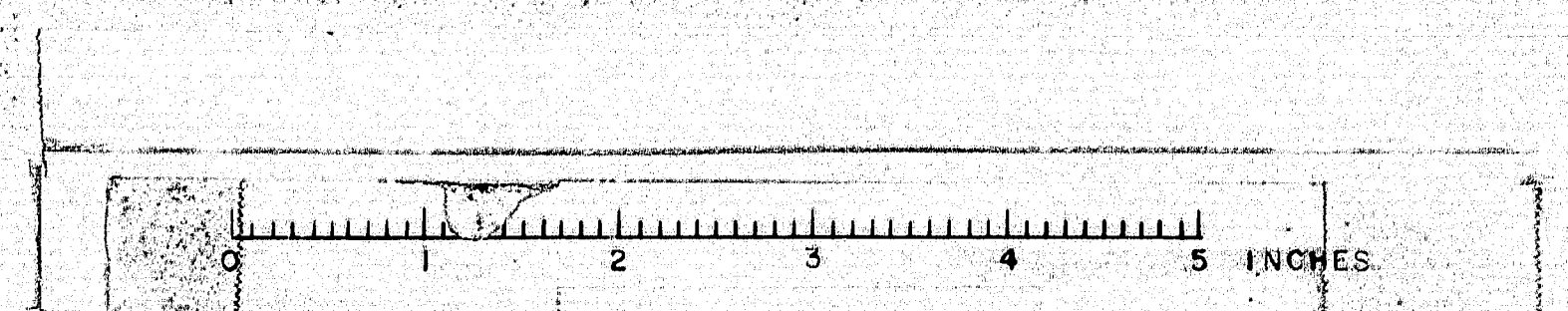
APR 9-1-65

NORTHBOUND BRIDGE	
CROSS FRAME - TYPE B2	
Bancroft & Martin Inc. South Portland & Maine	
I-95 OVER PENOBSCOT RIVER MEDWAY, MAINE	
CUSTOMER GALLAHAN BROS. INC. DESIGNER MAINE S.H.C. BRIDGES DIV.	
ORDER NO. VERBAL	DWG. NO. 65-19-530N

Prov. No. I-95-9(27)

DRAWN	4-14-65 JPR
REVISION	
REVISION	
REVISION	

98-70T



SHIP BILL OF MATERIAL						DWG. NO. 65-19-531N
MARK	NO.	MARK	SHAPE	LENGTH	WT.	REMARKS
B3AN	8		4x3 1/2 x 3/8 x 1/2	12 6/16		
B3BN	8		Do	12 9/8		
B3CN	8		Do	12 7/8		
B3DN	8		Do	12 7/8		
B3EN	8		Do	12 9/8		
B3FN	8		Do	12 6/16		
B3N	24		4x5 x 1/2	9 11/8		
	24	FBI	4x4 1/2 x 1/2	0 9		
FIELD	750		3/4" M. BOLTS	0 1 1/2		@ Frames B1-B24 B3

ALL MATERIAL A.S.T.M. A36

STRUCTURAL STEEL ITEM 702-1038

For Details see Dwg. 531

SHOP CONNECTIONS: Welded
FIELD CONNECTIONS: Bolted Welded
HOLES: 1/8"
PAINT: Red Lead Per Maine Specs

NORTHBOUND BRIDGE

CROSS FRAME - TYPE B3

Pinecroft & Martin Inc.
South Portland & Maine

I-95 OVER PENOBSCOT RIVER
MEDWAY, MAINE

Prov. No. I-95-9(7)

DRAWN 4-14-65 JPR

REVISION
REVISION
REVISION

CUSTOMER CALLAHAN BROS. INC.
DESIGNER MAINE S.H.C. BRIDGE DIV.

ORDER NO. VERBAL DWG. NO. 65-19-531N

98-70U

SHIP BILL OF MATERIAL						DWG. NO. 65-19-532N
MARK	NO.	MARK	SHAPE	LENGTH	WT.	REMARKS
C1AN	4		8WF24	9 2 1/2		
C1BN	4		Do	9 2 1/2		
C1CN	4		Do	9 5/16		
C1DN	4		Do	9 5/16		
C1EN	4		Do	9 5/16		
C1FN	4		Do	9 5/16		
C1GN	16		4x5 x 1/2	10 3/8		
C1HN	16		Do	10 5/8		
C1NN	16		Do	10 4/16		
FIELD	50		3/4" M. BOLTS	0 2 1/2		@ Frames C1
Do	100		Do	0 1 1/2		do

ALL MATERIAL A.S.T.M. A36

STRUCTURAL STEEL ITEM 702-1038

For Details see Dwg. 532

SHOP CONNECTIONS:
FIELD CONNECTIONS: Bolted-Welded
HOLES: 1/8"
PAINT: Red Lead Per Maine Specs

NORTHBOUND BRIDGE

CROSS FRAME - TYPE C1

Pinecroft & Martin Inc.
South Portland & Maine

I-95 OVER PENOBSCOT RIVER
MEDWAY, MAINE

Prov. No. I-95-9(7)

DRAWN 4-15-65 JPR

REVISION
REVISION
REVISION

CUSTOMER CALLAHAN BROS. INC.
DESIGNER MAINE S.H.C. BRIDGE DIV.

ORDER NO. VERBAL DWG. NO. 65-19-532N

98-70V

SHIP BILL OF MATERIAL						DWG. NO. 65-19-533N
MARK	NO.	MARK	SHAPE	LENGTH	WT.	REMARKS
L1N	41		ST5WF10.5	13 7		
L2N	41			10 8 1/4		
L3N	4			10 8 3/8		
L4N	32			12 7 1/4		
L5N	32			9 11 1/2		
L6N	4			12 3 1/4		
L7N	4			9 10 3/8		
L8N	4		ST5WF10.5	13 7 1/8		

ALL MATERIAL A.S.T.M. A36

STRUCTURAL STEEL ITEM 702-1038

For Details see Dwg. 533

SHOP CONNECTIONS:
FIELD CONNECTIONS: Welded
HOLES:
PAINT: Red Lead Per Maine Specs

NORTHBOUND BRIDGE

LATERAL BRACING

Pinecroft & Martin Inc.
South Portland & Maine

I-95 OVER PENOBSCOT RIVER
MEDWAY, MAINE

Prov. No. I-95-9(7)

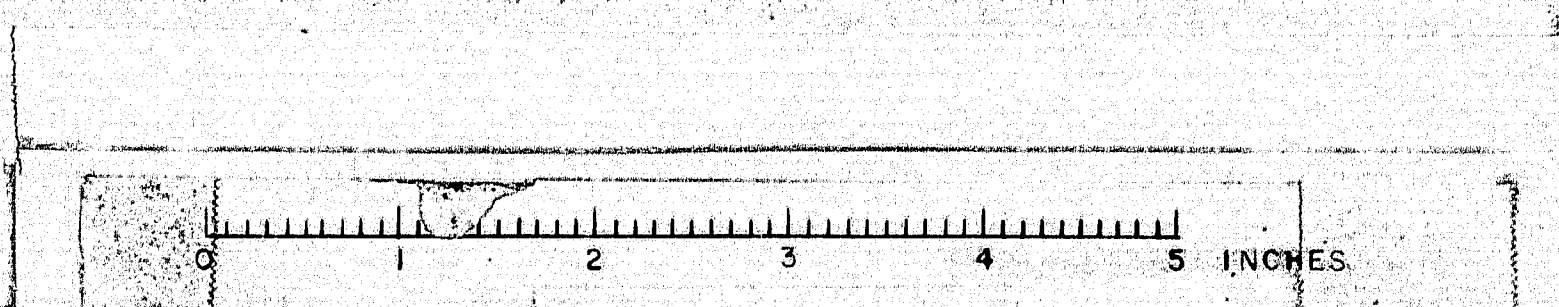
DRAWN 4-30-65 JPR

REVISION
REVISION
REVISION

CUSTOMER CALLAHAN BROS. INC.
DESIGNER MAINE S.H.C. BRIDGE DIV.

ORDER NO. VERBAL DWG. NO. 65-19-533N

98-70W



SHIP BILL OF MATERIAL DWG. NO. 65-19-S34N						
MARK	NO.	MARK	SHAPE	LENGTH	WT.	REMARKS
EDIN	1		ASSEMBLY			(4 Parts)
	2	pl	R 30x1"	16 1/8		CHK'd R.
	46	b1	Bar 2x3/8	1	1	
	6	b2	Bar 6x3/8	0	7	
	6	b3	Bar 4x3/8	1	2 1/2	
	16	b4	Bar 2x3/8	1	4	
	30	b5	Bar 2x3/8	1	8	
	4	b6	Bar 8x3/4	15	5 1/2	
	121	b7	Bar 5x3/8	1	0	
	6	SHOP B.L.S. BOLTS		0	24	
	6	Do 8" WASHERS				

ALL MATERIAL PER AISC

STRUCTURAL STEEL FROM 706-1035

For Details see Dwg. 534

SHOP CONNECTIONS: Welded - Bolted
FIELD CONNECTIONS: Bolted - Welded
NOTES: As Noted
PAINT: Red Lead Per Maine Specs

NORTHBOUND BRIDGE

EXPANSION DAM-ABUT #1

Penicraft & Martin, Inc.
South Portland, Maine

I-95 OVER PENOBSCOT RIVER
MEDWAY, MAINE

CUSTOMER CALLAHAN BROS. INC.
DESIGNER MAINE S.H.C. BRIDGEDY.

ORDER NO. VERBAL DWG. NO. 65-19-S34N

98-70X

SHIP BILL OF MATERIAL DWG. NO. 65-19-S35N						
MARK	NO.	MARK	SHAPE	LENGTH	WT.	REMARKS
EDIN	1		ASSEMBLY			(4 Parts)
	2	pl	R 24x1"	15 1/2		CHK'd R.
	46	b1	Bar 2x3/8	1	1	
	6	b2	Bar 6x3/8	0	7	
	6	b3	Bar 4x3/8	1	3 1/2	
	16	b4	Bar 2x3/8	1	4	
	30	b5	Bar 2x3/8	1	8	
	4	b6	Bar 8x3/4	15	5 1/2	
	6	SHOP B.L.S. BOLTS		0	24	
	6	Do 8" WASHERS				

ALL MATERIAL PER AISC

STRUCTURAL STEEL FROM 706-1035

For Details see Dwg. 535

SHOP CONNECTIONS: Welded - Bolted
FIELD CONNECTIONS: Bolted - Welded
NOTES: As Noted
PAINT: Red Lead Per Maine Specs

NORTHBOUND BRIDGE

EXPANSION DAM-ABUT #2

Penicraft & Martin, Inc.
South Portland, Maine

I-95 OVER PENOBSCOT RIVER
MEDWAY, MAINE

CUSTOMER CALLAHAN BROS. INC.
DESIGNER MAINE S.H.C. BRIDGEDY.

ORDER NO. VERBAL DWG. NO. 65-19-S35N

98-70Y

SHIP BILL OF MATERIAL DWG. NO. 65-19-S36N						
MARK	NO.	MARK	SHAPE	LENGTH	WT.	REMARKS
SDIN	1		ASSEMBLY			
SDIN	1	Do				
	2	pl	R 18x3/8	3	2 1/2	CHK'd R.
	2	pl	R 24x3/8	1	6 1/2	
	2	b1	Bar 2x3/8	2	10 1/2	CHK'd R.
	2	b2	R 13 1/2x3/8	3	0 3/8	
	2	b3	R 24x3/8	1	2	
	2	b4	Bar 2x3/8	0	8 3/8	
	24	b6	Bar 1 1/2x3/8	0	11	
	4	b7	Do	1	0	

ALL MATERIAL PER AISC

STRUCTURAL STEEL FROM 706-1035

For Details see Dwg. 536

SHOP CONNECTIONS: Welded
FIELD CONNECTIONS:
NOTES:
PAINT: Red Lead Per Maine Specs

NORTHBOUND BRIDGE

SIDEWALK DAMS-ABUT #1

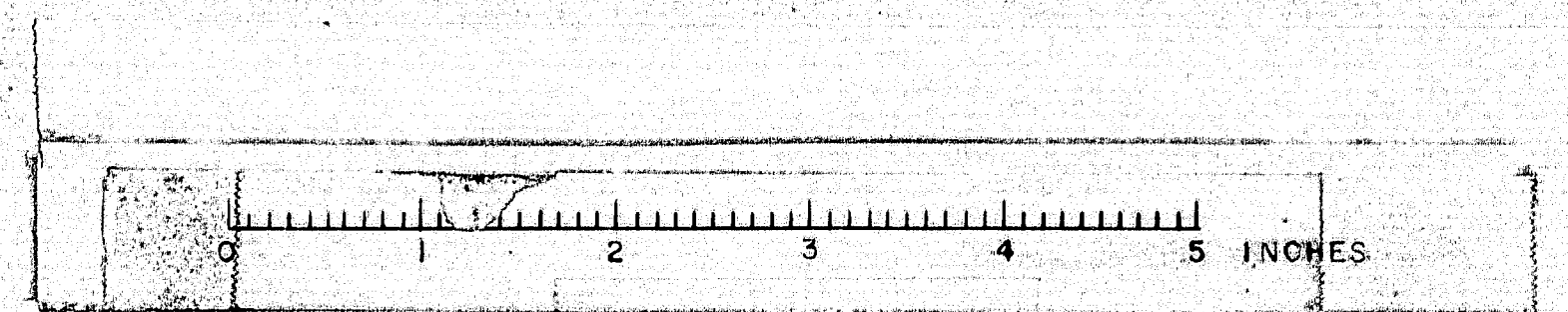
Penicraft & Martin, Inc.
South Portland, Maine

I-95 OVER PENOBSCOT RIVER
MEDWAY, MAINE

CUSTOMER CALLAHAN BROS. INC.
DESIGNER MAINE S.H.C. BRIDGEDY.

ORDER NO. VERBAL DWG. NO. 65-19-S36N

98-70Z



For Details see Dwg. 537

APP. 9. 10. 65

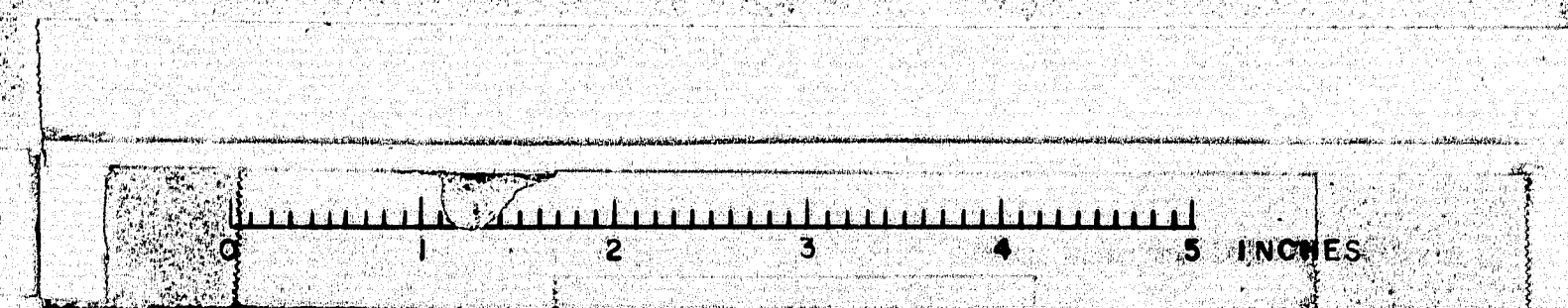
NORTHBOUND BRIDGE
SIDEWALK DAMS - ABUT #2
Plancroft & Martin Inc. Leath, Portland & Maine
I-95 OVER PENOBSCOT RIVER MEDWAY, MAINE

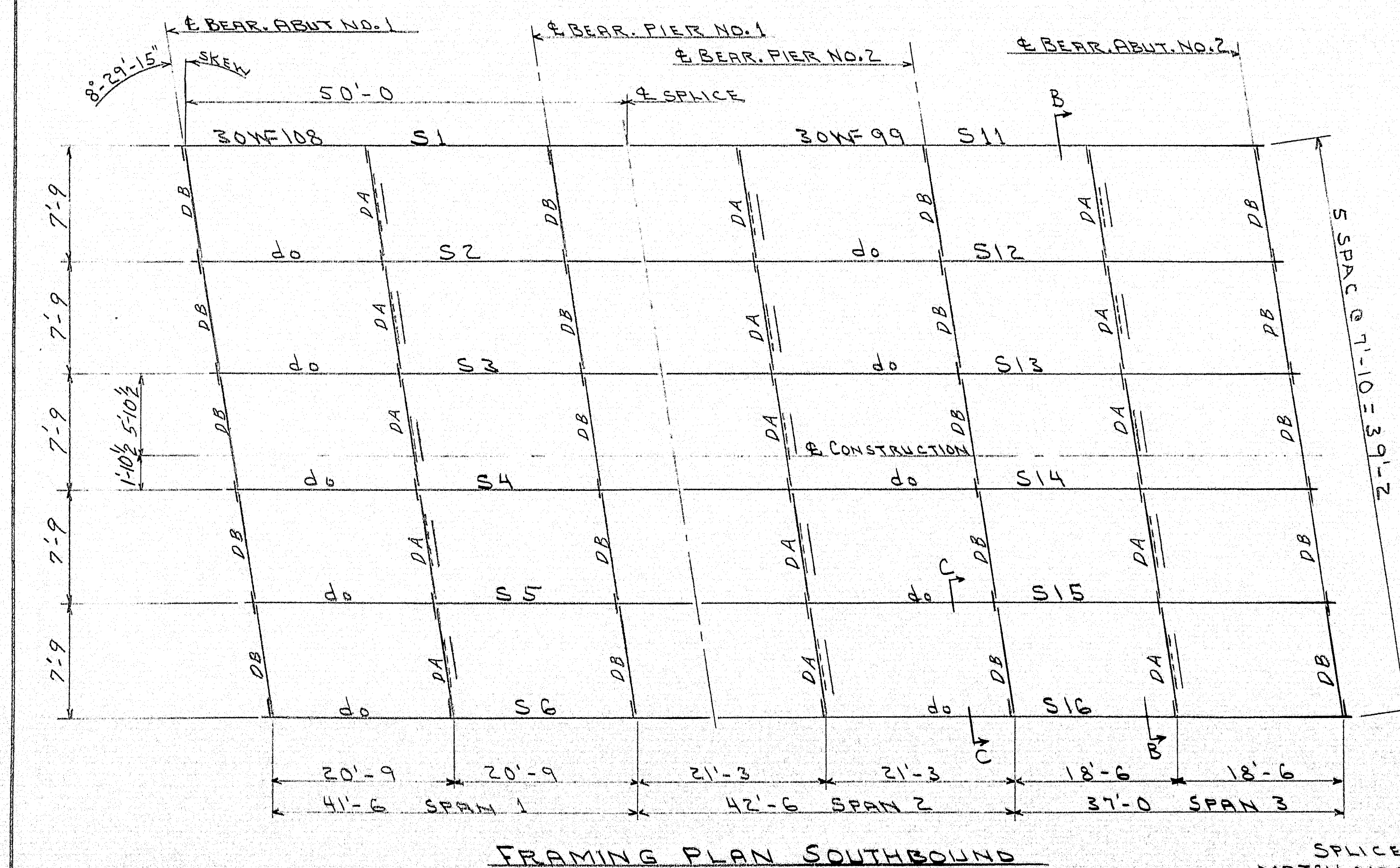
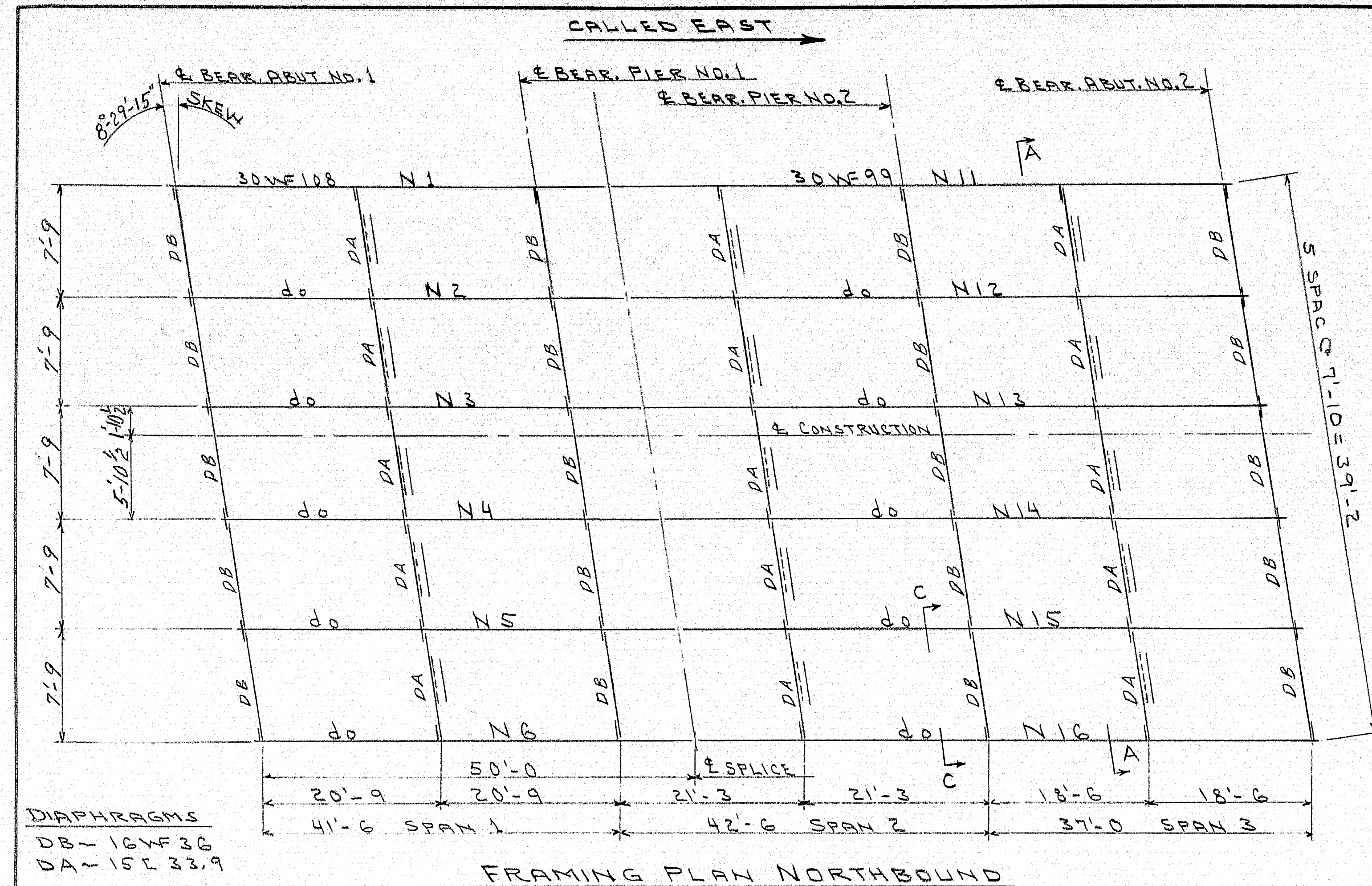
Proc. No I-95-9(29)

CUSTOMER CALLAHAN BROS. INC.
DESIGNER MAINE S.H.C. BRIDGEDIV.
ORDER NO. VERBAL DWG. NO. 65-19 S37N

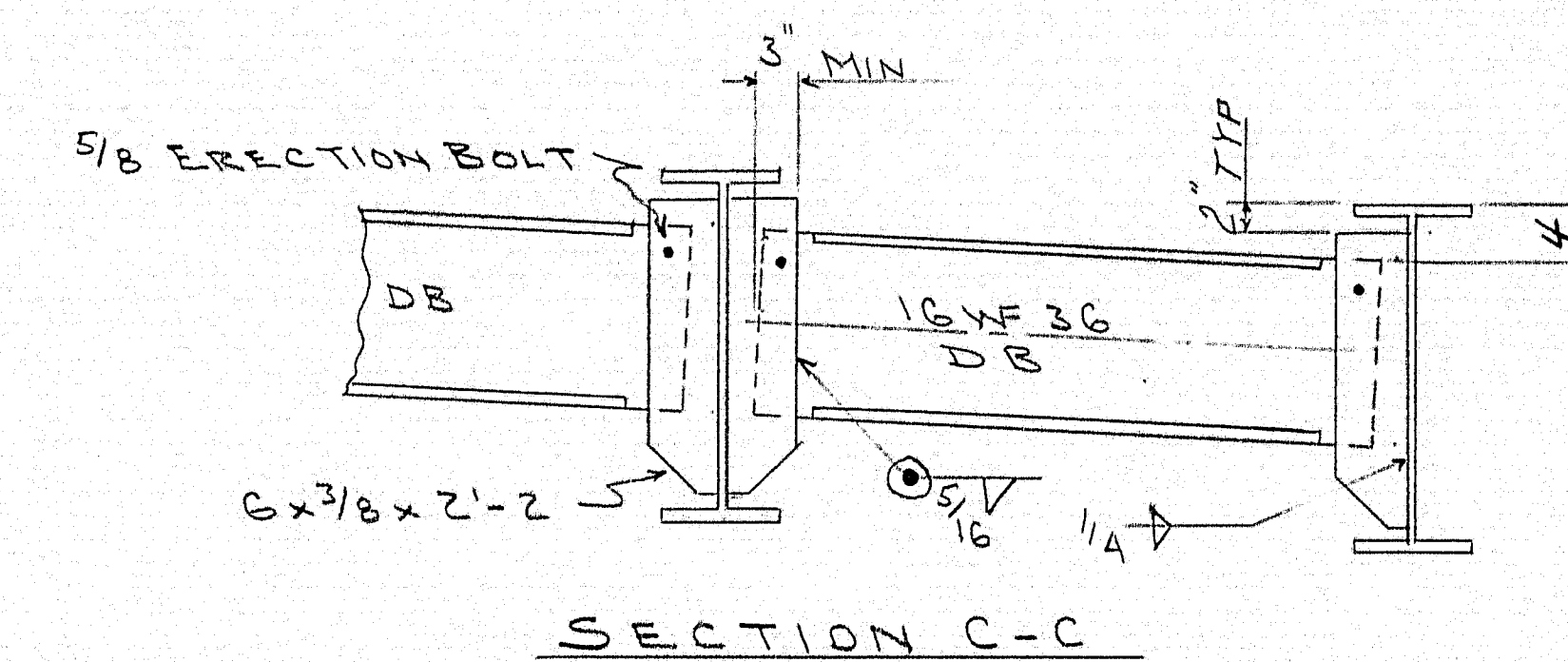
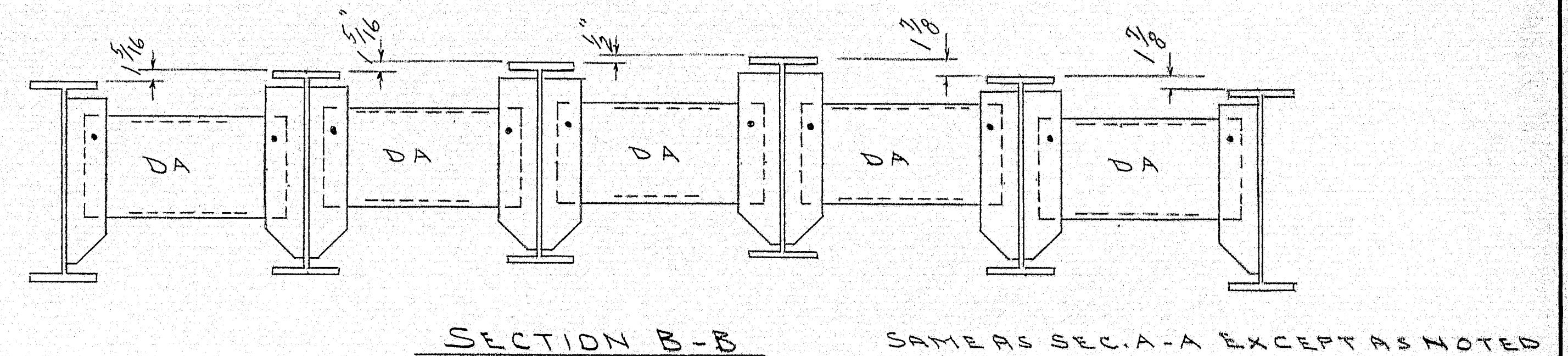
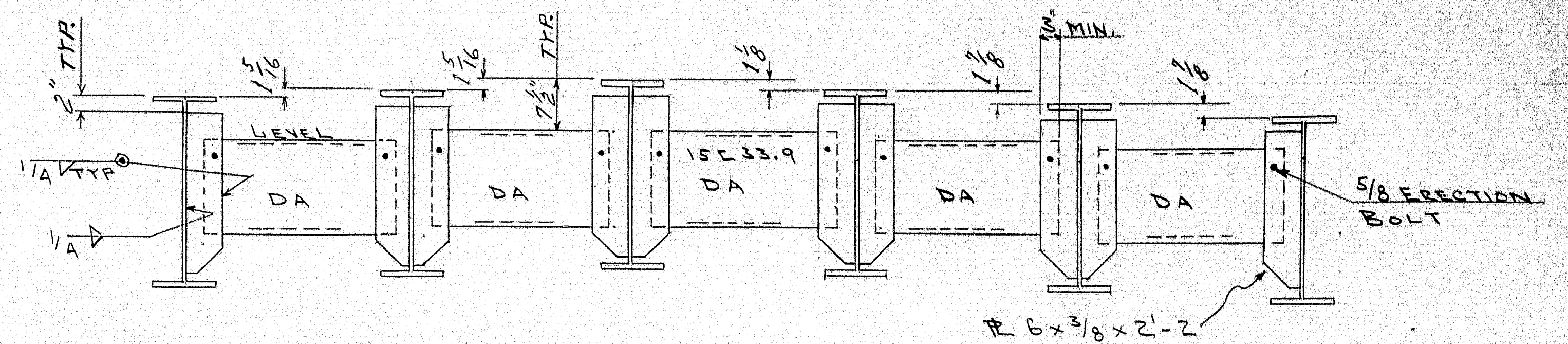
ORDER NO. VERBAL DWG. NO. 65-19-537N

98-71



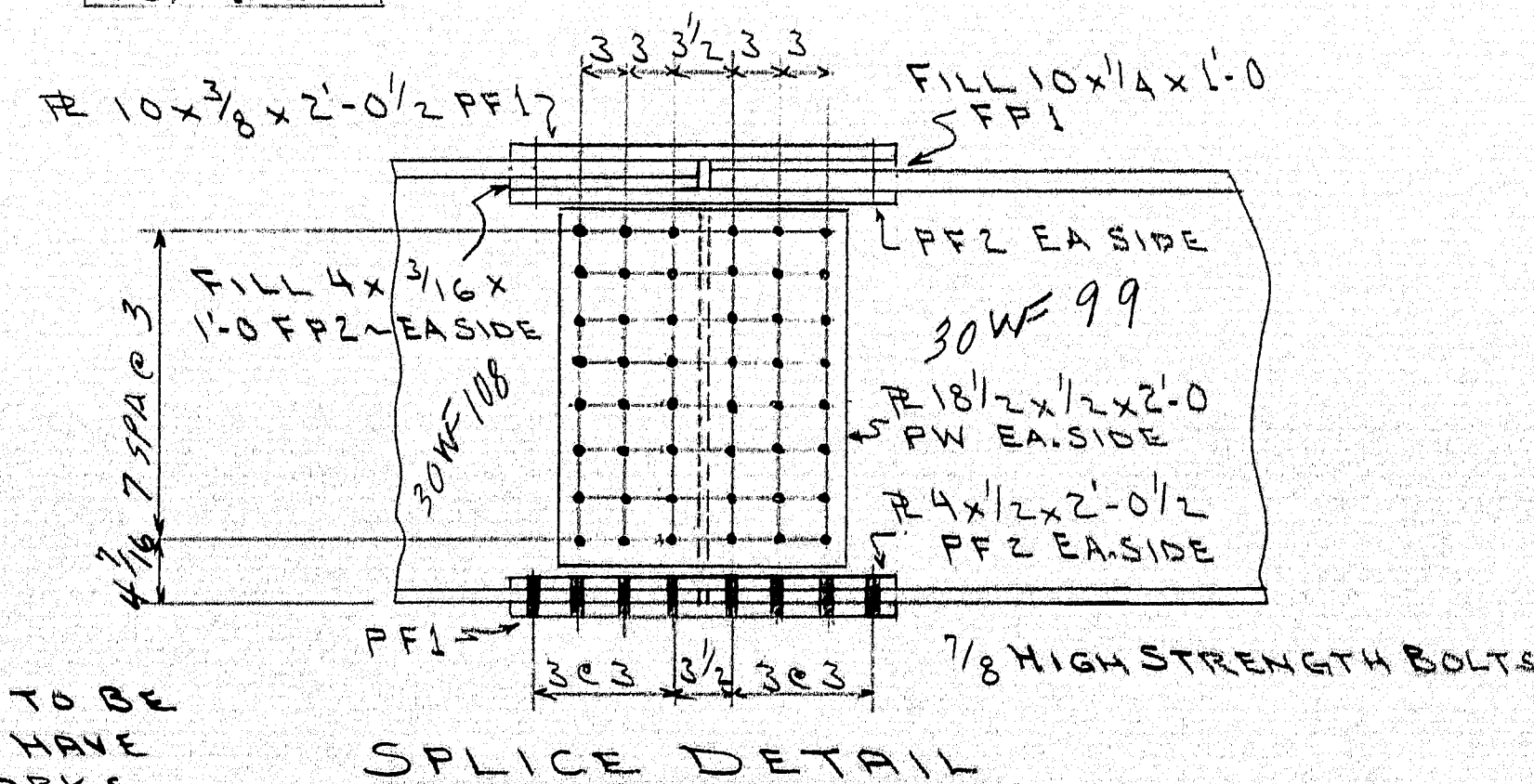
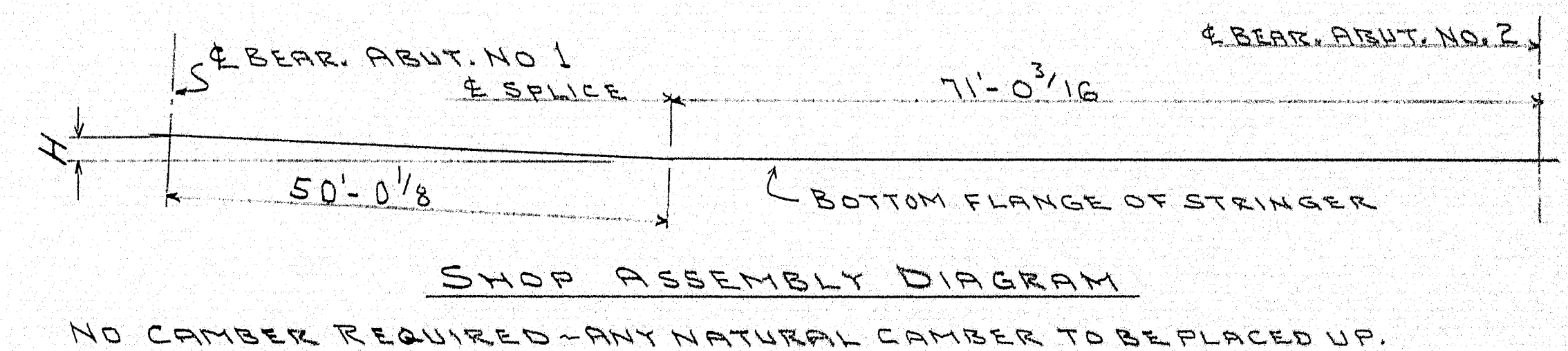


SPICE PLATES TO BE
MATCH MARKED AND HAVE
INDIVIDUAL BEAM MARKS.



VALUES OF H

N1	15/8
N2	15/8
N3	15/8
N4	15/16
N5	13/16
N6	13/16
S1	15/16
S2	15/16
S3	15/16
S4	15/16
S5	17/16
S6	17/16



PROJECT 1-95-B(62)

FRAMING PLAN

Bancroft & Martin Inc.
South Portland, Maine

INTERSTATE 95
OVER ROUTE 116
TOWN OF MEDWAY, ME.

CUSTOMER CALLAHAN BROS., INC.
DESIGNER M.S.M.C. - BRIDGE DIVISION

ORDER NO. _____ DWG. NO. 25-18-E.1

APPROVED 5-14-65

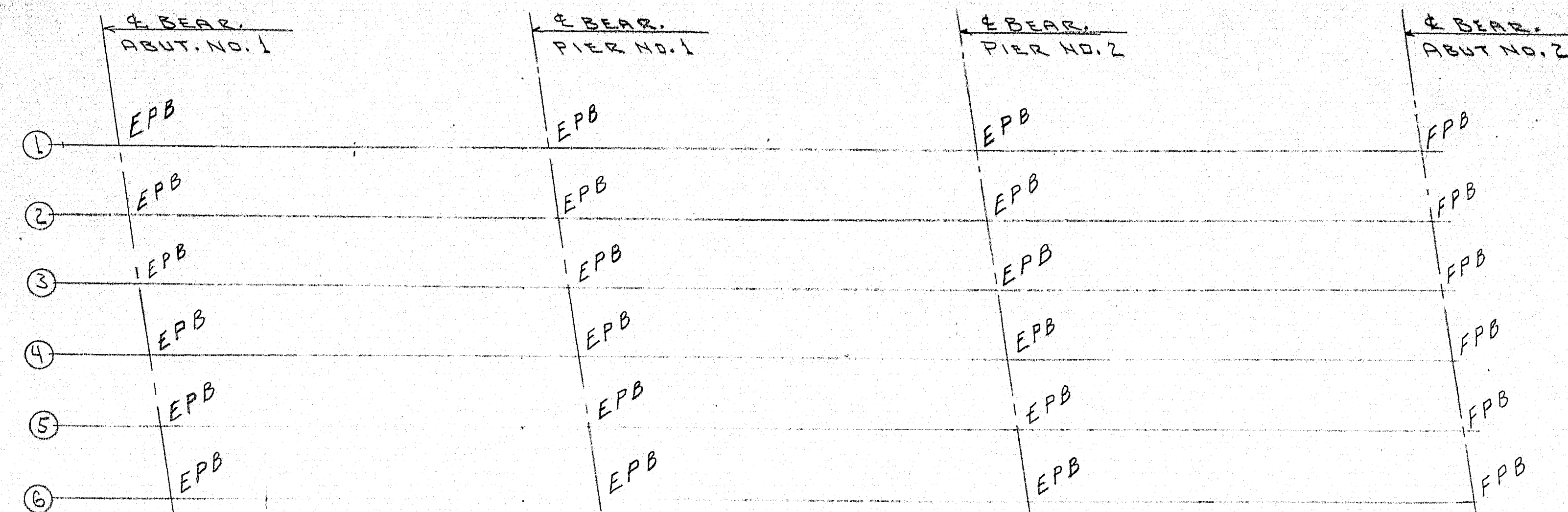
DRAWN 5-6-65 CLE

REVISION

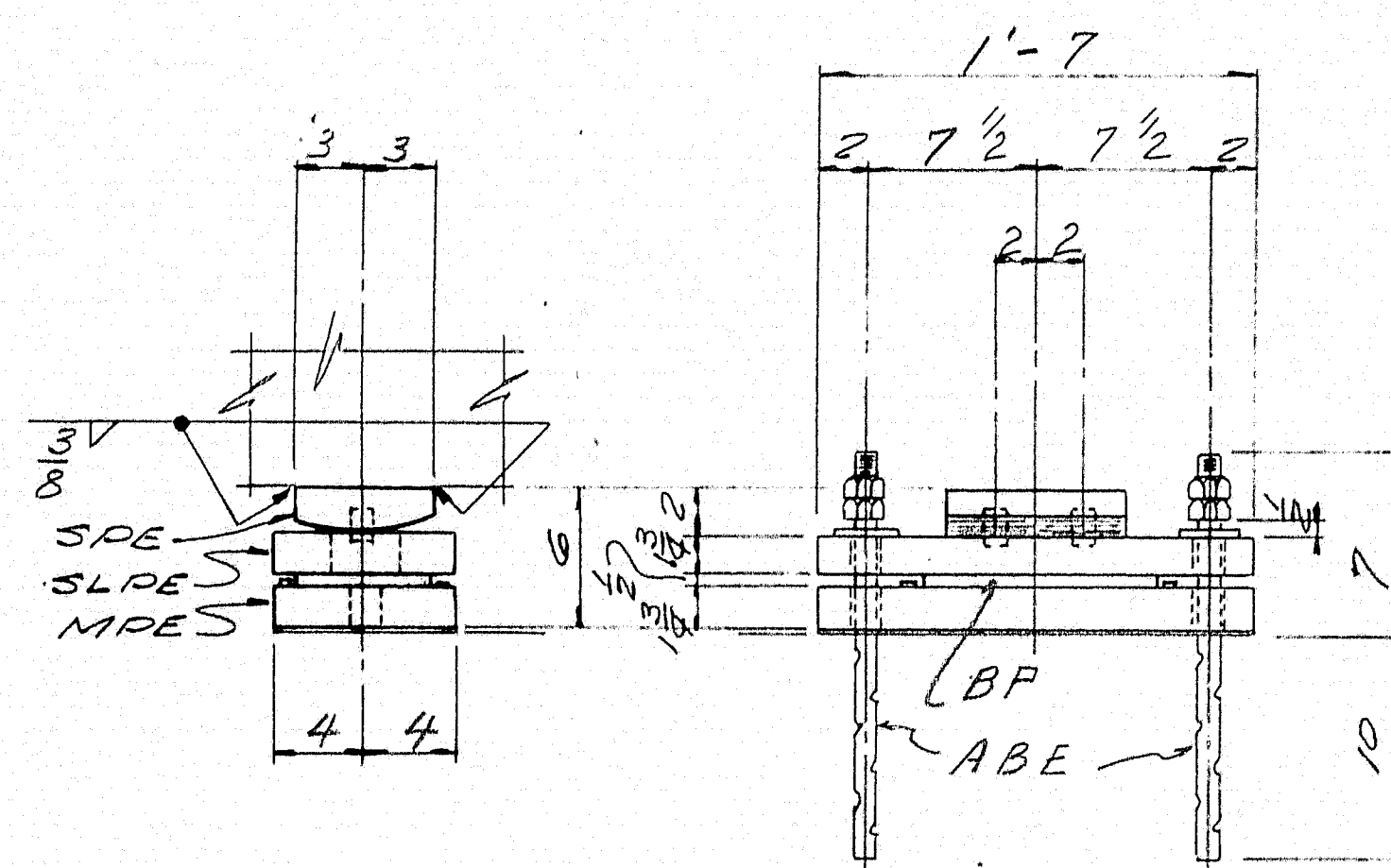
REVISION

REVISION

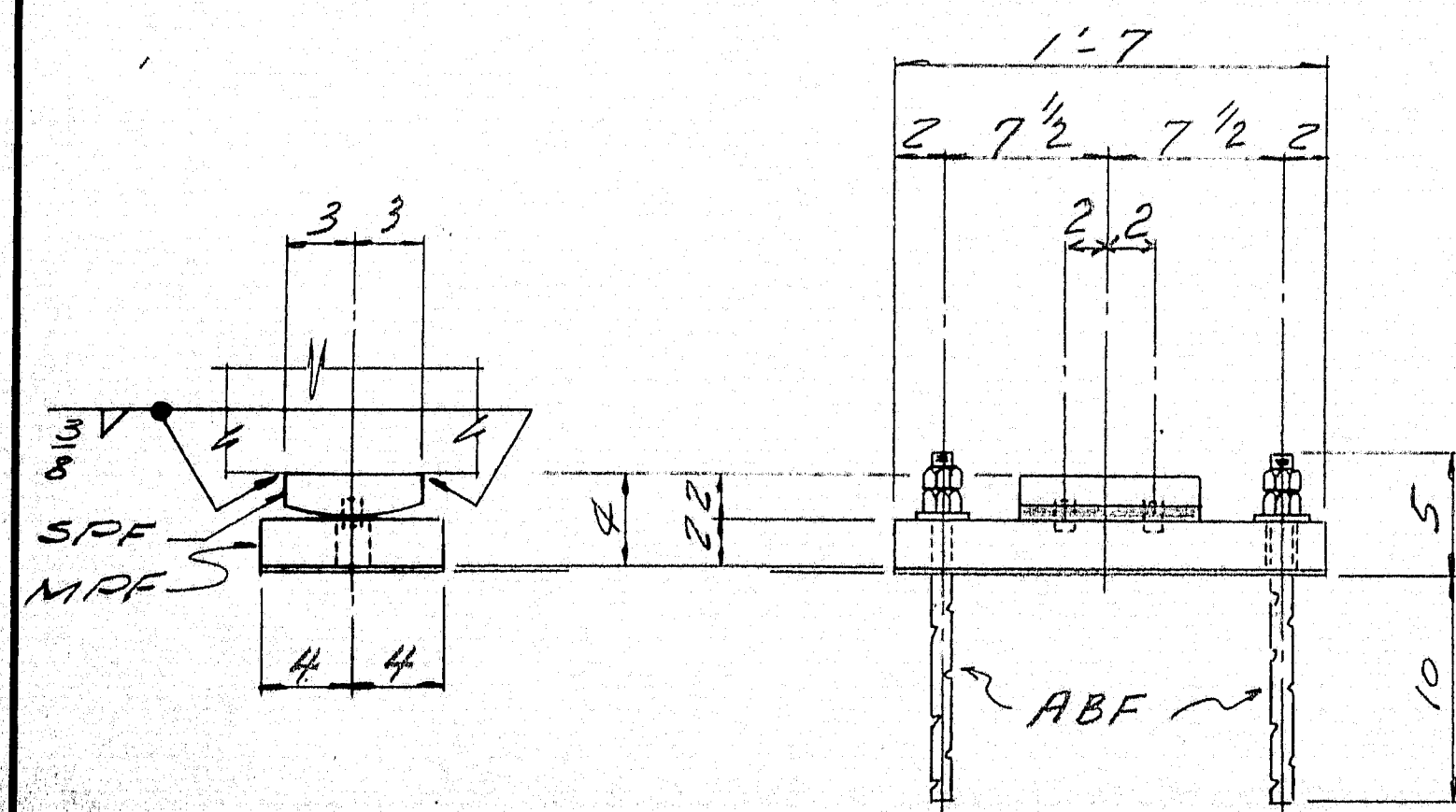
98-105



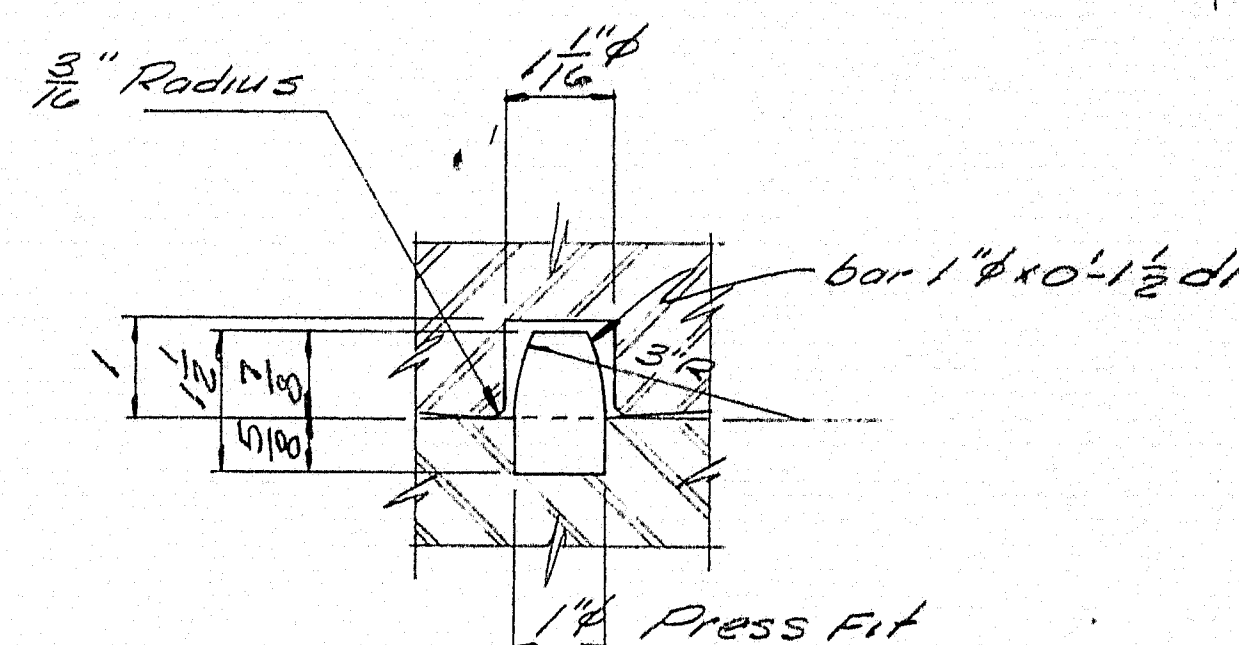
BEARING LAYOUT - NORTH BOUND & SOUTH BOUND



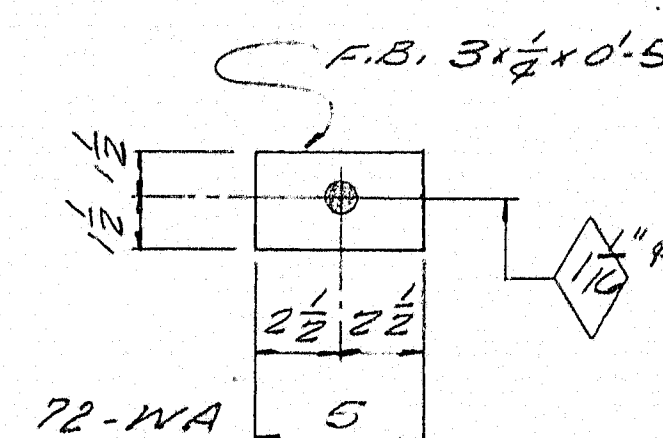
EXPANSION BEARING
ASSEMBLY EPB



FIXED BEARING
ASSEMBLY FPB



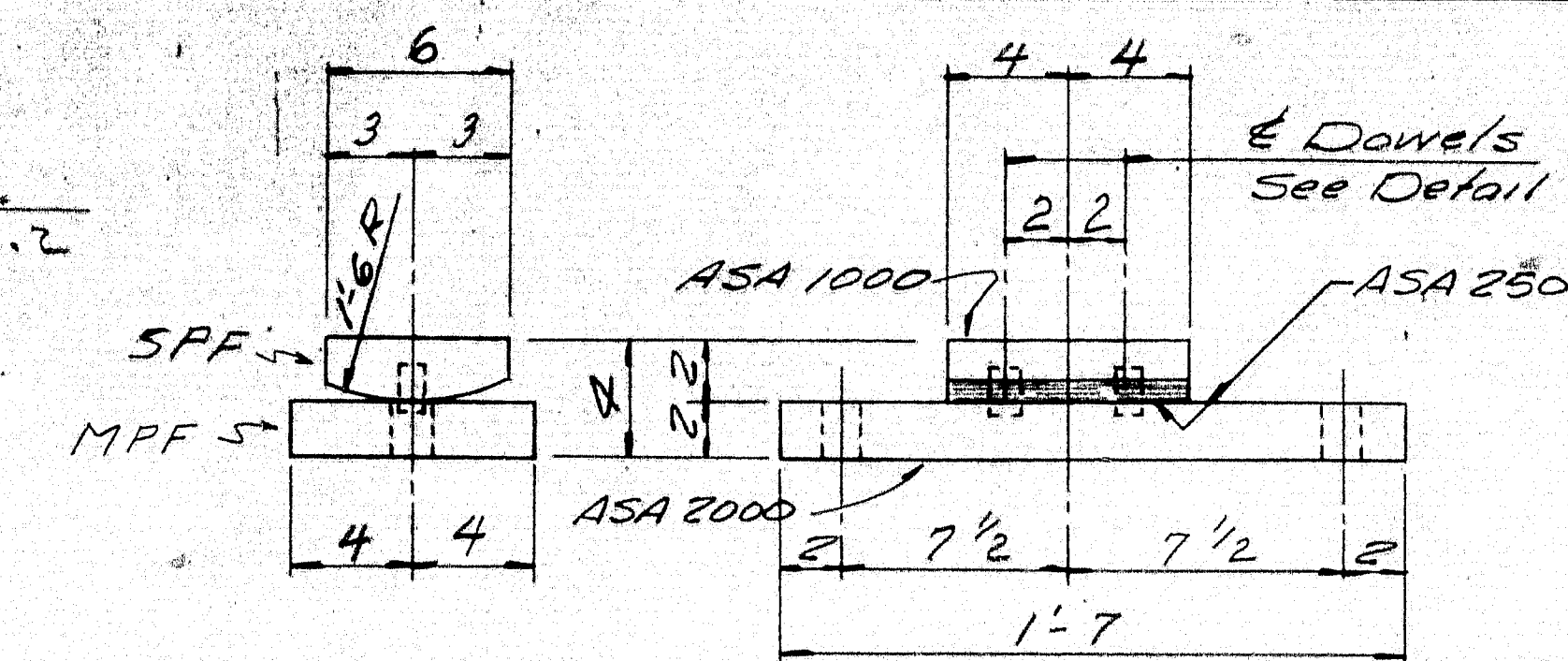
DOWEL DETAIL



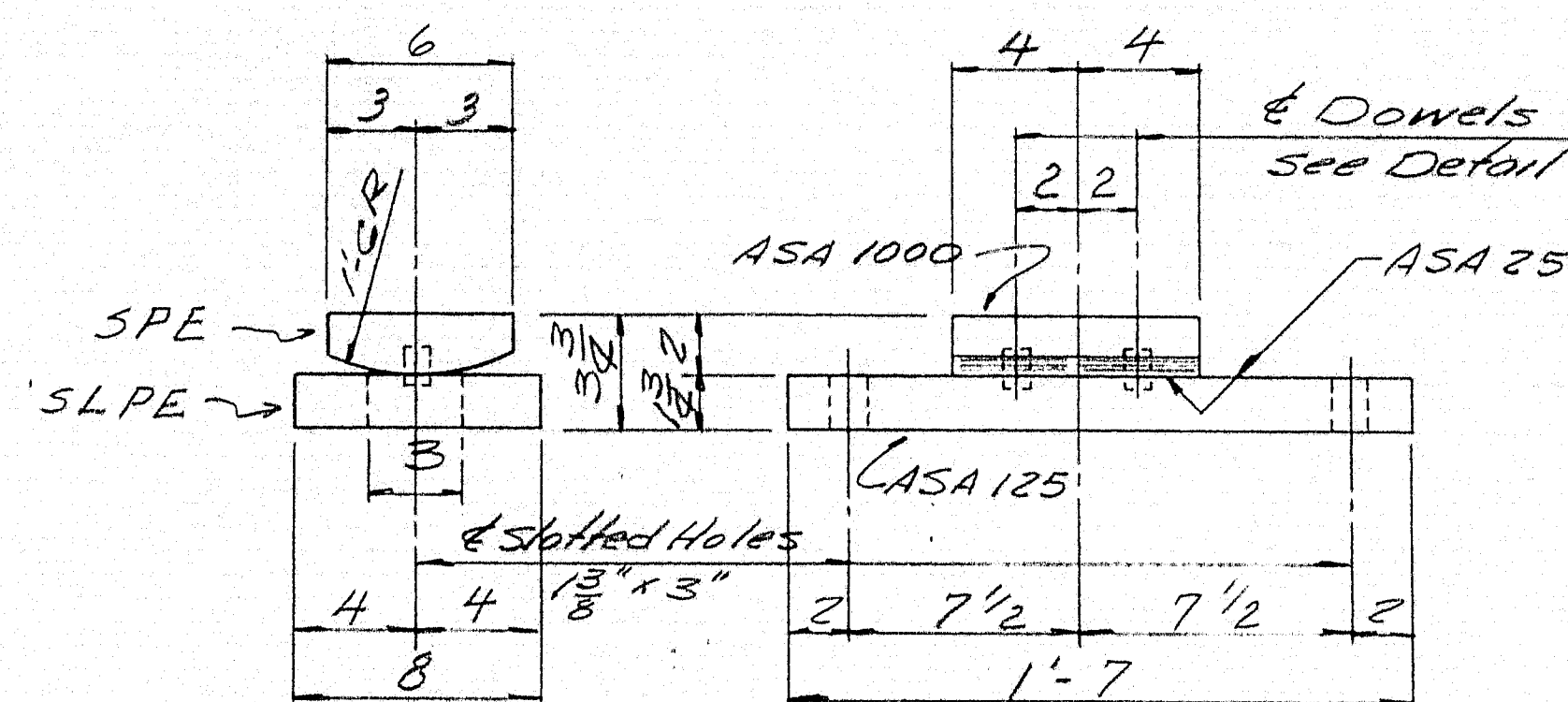
FABCO "SA47" PAD
FP-48 REQ'D.
8x1/8 x 1-7

PAIN T NOTE

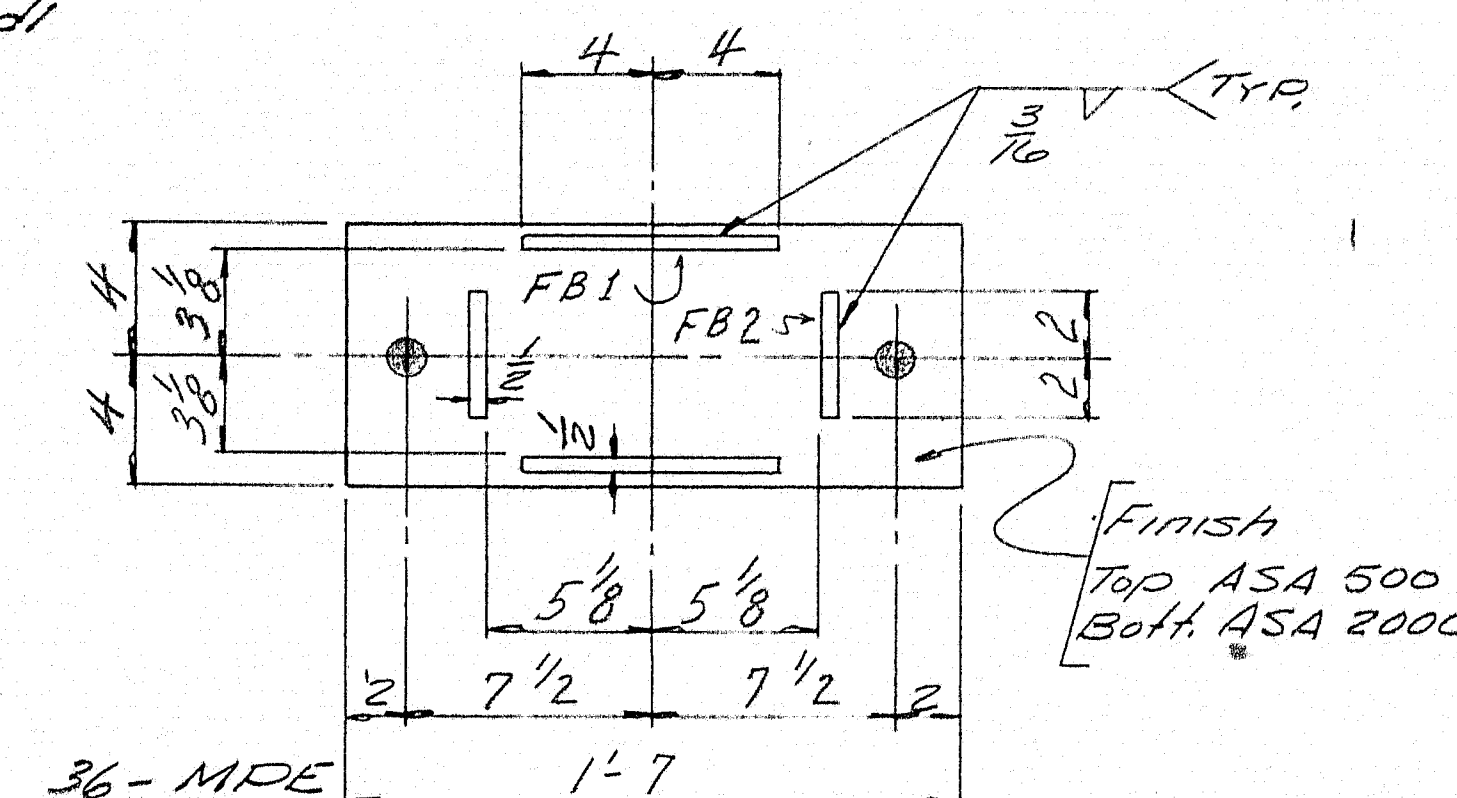
No paint on Anchor Bolts, Oil threads.
No paint on self-lubricating bronze plate.
No paint on areas in contact with bronze plate. Coat with mixture of white lead and tallow.
No paint on top surface and 1" down from top on sides of sole plates "SPE" & "SPF". Coat with boiled linseed oil.



DETAIL ASSEMBLY FPB
12 REQ'D.



DETAIL SPE & SLPE
36 REQ'D.



FIXED

EXPANSION

ANCHOR BOLTS

SHIP		BILL OF MATERIAL				DWG. NO. 65-18-51
MARK	NO.	MARK	SHAPE	LENGTH	WT.	REMARKS
EPB	12		ASSEMBLY			
EPB	36		do			
	12	SPF	6x2	0.8		
	12	MPF	8x2	1.7		
	36	SPE	6x2	0.8		
	36	SLPE	8x1 3/4	1.7		
	36	MPF	do	1.7		
	72	FB1	BAR 1/2 x 1/4	0.8		
	72	FB2	do	0.4		
	96	d1	1" BAR	0.1 1/2		
	36	BP	6x1 1/2	0.10		SELF LUBRICATING BRONZE PLATE
FP	48		Pad 8x1/8	1.7		REQ # 5645
ABE	72		1" Bar	1.5		FABCO SA 47
ABF	24		do	1.3		REQ NO. 5646
	192	shop	1" NUTS			HEX
	24	do	1" Washer			STD.
	72	WA	FB 3x1/4	0.5		
Allowance to be made for machining						
ITEM 702-103 9						

All steel ASTM-A36, except Anchor Bolts may be A7
All welds to be made with E70 Electrodes.

SHOP CONNECTIONS: Welded

FIELD CONNECTIONS: Welded

HOLES: 1/8" and as noted

PAINT: Red lead and as noted per M.S.H.C. spec.

PROJECT I-95-8(62)

BEARING DETAIL

Bancroft & Martin Inc.

South Portland, Maine

INTERSTATE 95

OVER ROUTE 116

TOWN OF MEDWAY-ME

CUSTOMER: CALLAHAN BROS. INC.

DESIGNER: M.S.H.C. BRIDGE DIV.

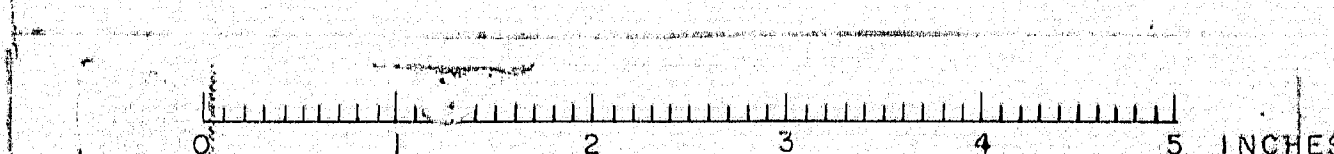
ORDER NO. _____

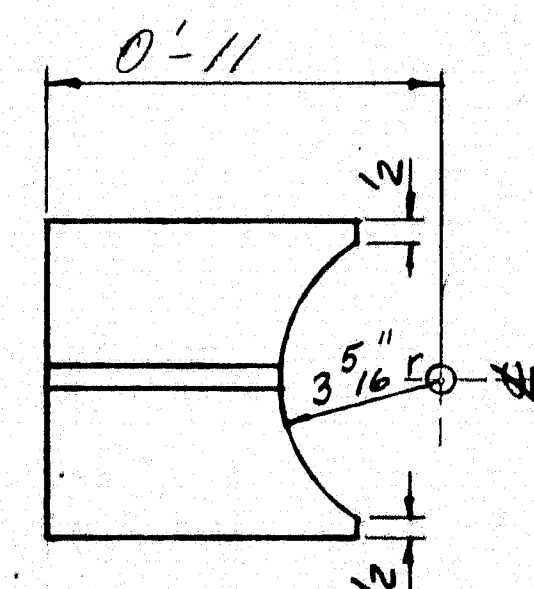
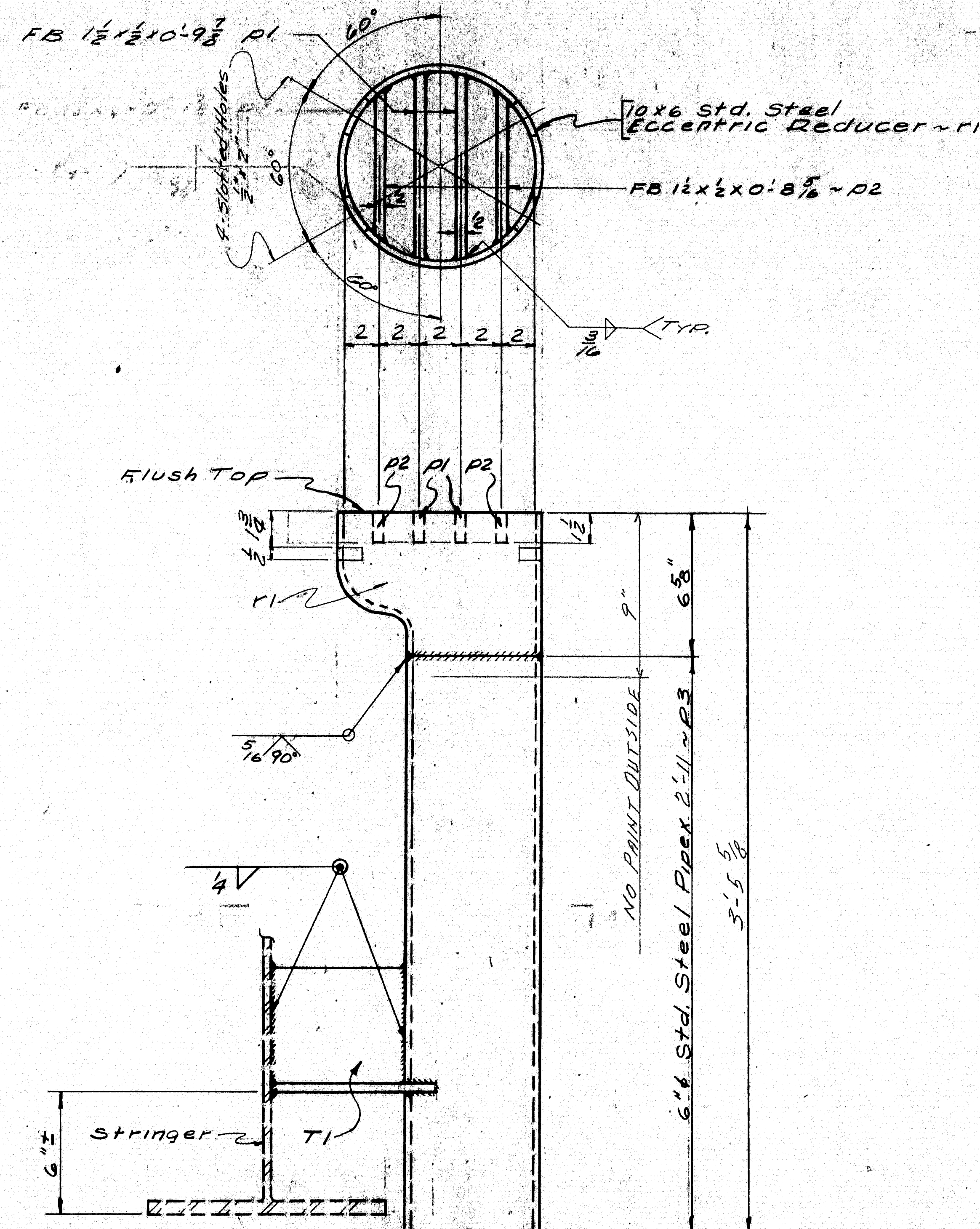
DWG. NO. 65-18-51

APPROVED 4-16-65

DRAWN	4-9-65	CLE
REVISION		
REVISION		
REVISION		

98-106





ST 6 WF 13.5 X 0-9 7/8 ~ T1
12 REQ'D.
NO PAINT

DRAIN DRI ~ 12 REQ'D.

NOTE:
SEE STATE'S DWGS. FOR
DRAIN LOCATION

SHIP		BILL OF MATERIAL				DWG. NO. 65-107
MARK	NO.	MARK	SHAPE	LENGTH	WT.	REMARKS
DR1	12		Shop Assy			
T1	12		ST6 WF 13.5	0 9 7/8		
	24	P1	FB 1 1/2 x 1/2	0 7 1/2		
	24	P2	DO	0 8 1/2		
	12	P3	6" STD. PIPE	2' 11"		
	12	F1	10 X 6	0 7		Std. Steel Eccentric Reducer Req. # 5647

SHOP CONNECTIONS: WELDED
FIELD CONNECTIONS: WELDED
HOLES:
PAINT: PER ME. STATE SPECS.
RED LEAD & OIL AS NOTED
PROJECT I-95-B (32)

DRAIN DETAILS

Bancroft & Martin Inc.
South Portland & Maine

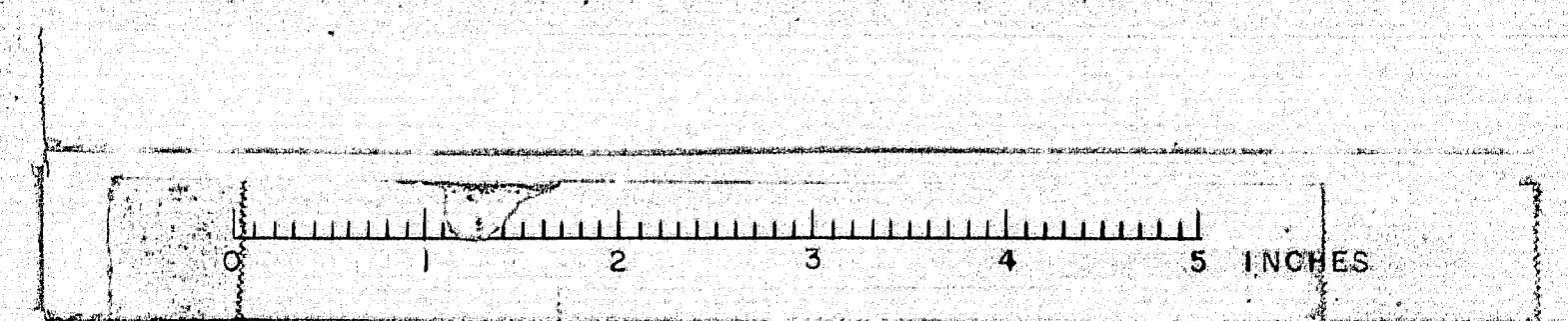
INTERSTATE 95
OVER ROUTE 116
TOWN OF MEDWAY, ME

CUSTOMER: CARRIAGE BEDS INC.
DESIGNER: M.S.H.C.

DRAWN	4-12-65	CLE
REVISION		
REVISION		
REVISION		

ORDER NO. _____ DWG. NO. 65-107

98-107



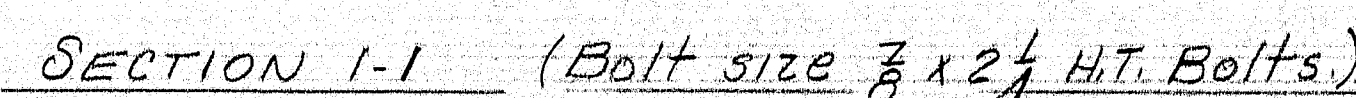
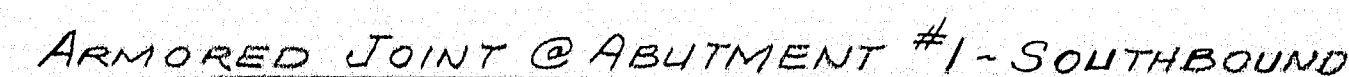
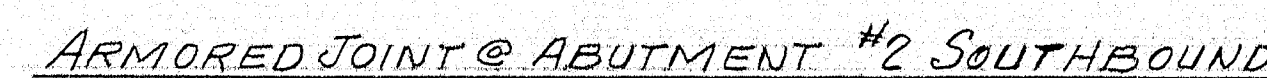
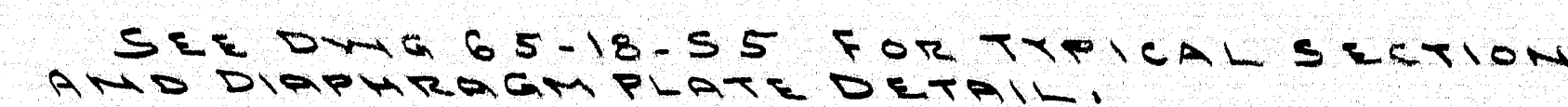
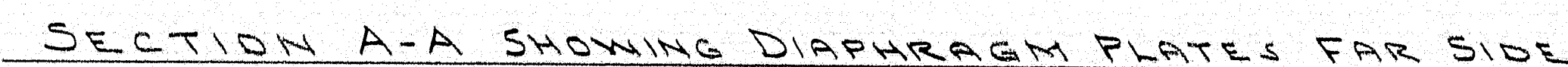
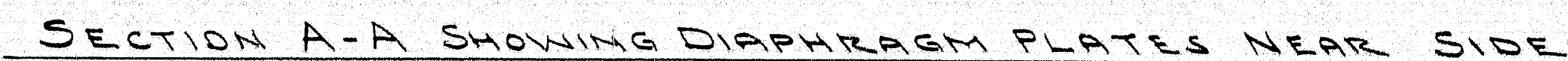
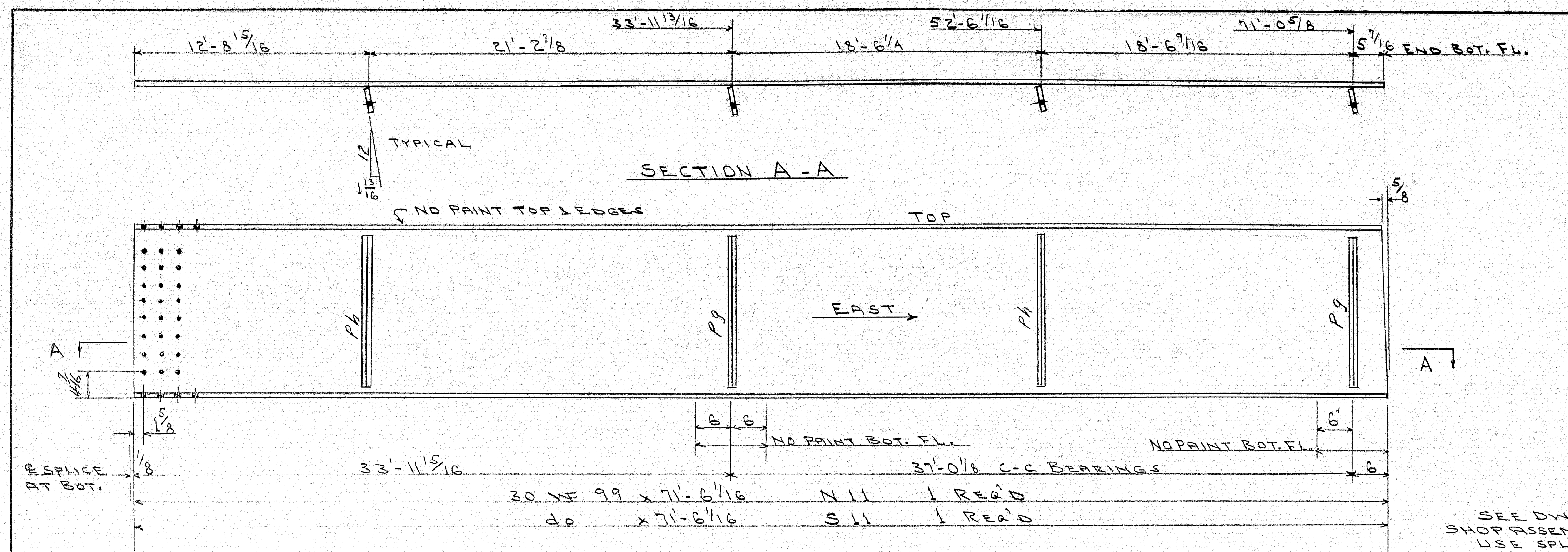


TABLE 1

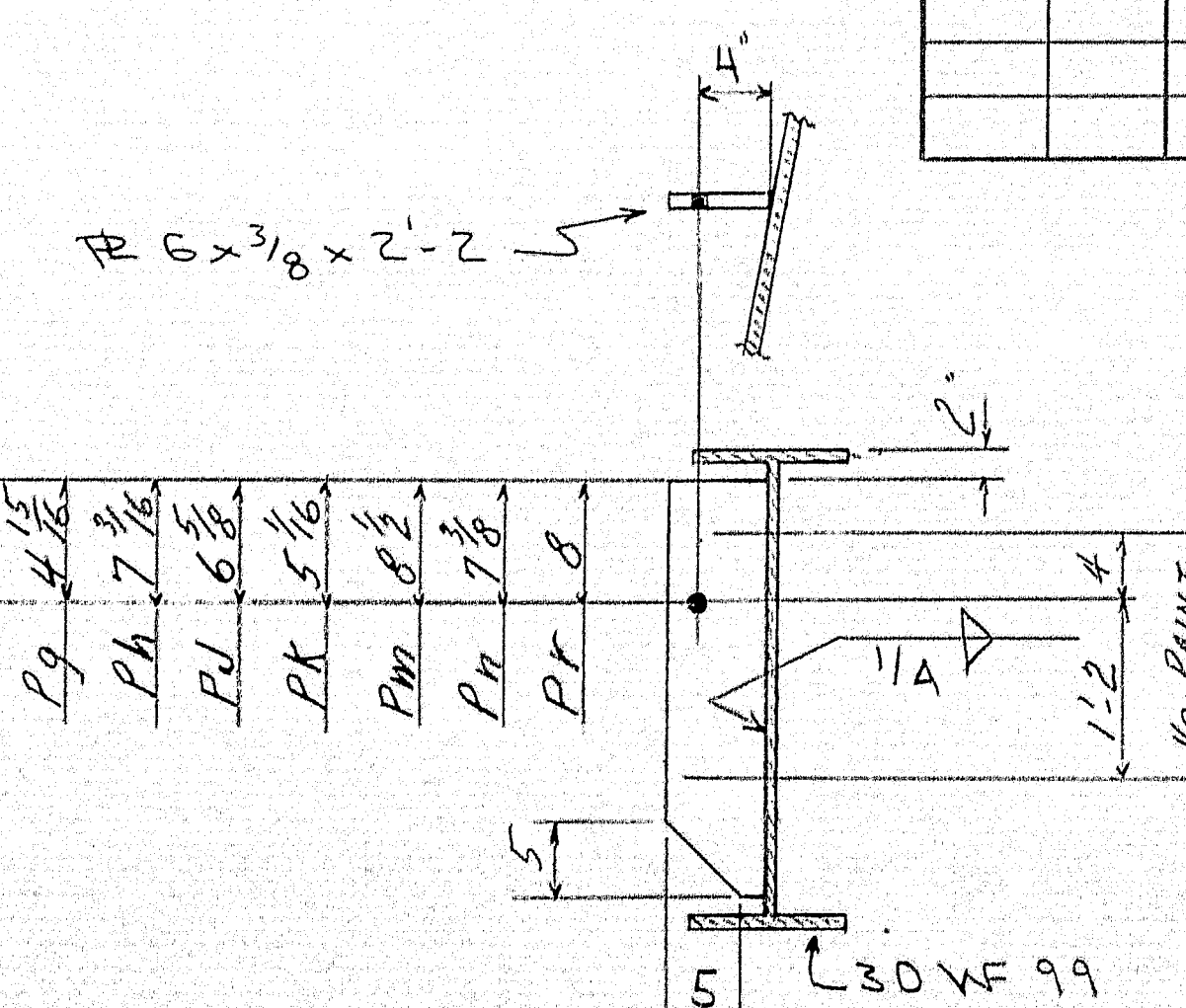
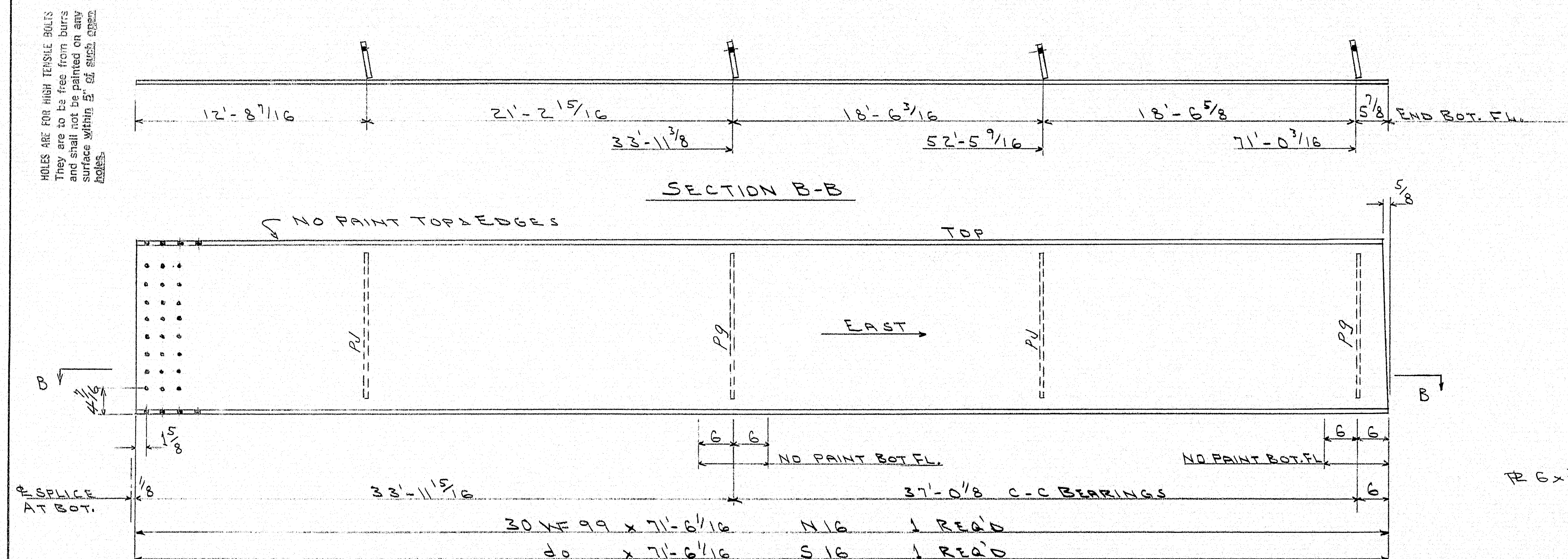
Year	Population	Population Density	Urban Population	Urban Population Density	Rural Population	Rural Population Density
1980	16,700,000	100/km ²	10,000,000	100/km ²	6,700,000	100/km ²
1990	20,000,000	120/km ²	12,000,000	120/km ²	8,000,000	120/km ²
2000	23,000,000	140/km ²	14,000,000	140/km ²	9,000,000	140/km ²
2010	26,000,000	160/km ²	16,000,000	160/km ²	10,000,000	160/km ²



00 11



SEE DWG 65-18-E1 FOR SHOP ASSEMBLY.
USE SPLICE PLATES PF1 & PF2 AS TEMPLATES TO DRILL HOLES IN WEST END.



TYPICAL SECTIONS
N 11 TO N 16 & S 11 TO S 16

SHIP		BILL OF MATERIAL				DWG. NO. 65-18-S7
MARK	NO.	MARK	SHAPE	LENGTH	WT.	REMARKS
N 11	1		30 WF 99	71' 6 1/16		
N 16	1		do	71' 6 1/16		
S 11	1		do	71' 6 1/16		
S 16	1		do	71' 6 1/16		
	8	P 9	FB 6 x 3/8	2' 2"		
	4	P 6	do	2' 2"		
	4	P 1	do	2' 2"		
MATERIAL A 36						
ITEM 702-103 A						

SHOP CONNECTIONS: WELDED - E70 ROD
FIELD CONNECTIONS: 7/8 H.T. BOLTS
HOLES: 15/16"
PAINT: RED LEAD PER MSHC SPECS.

PROJECT I-95-8(62)
STRINGER DETAILS

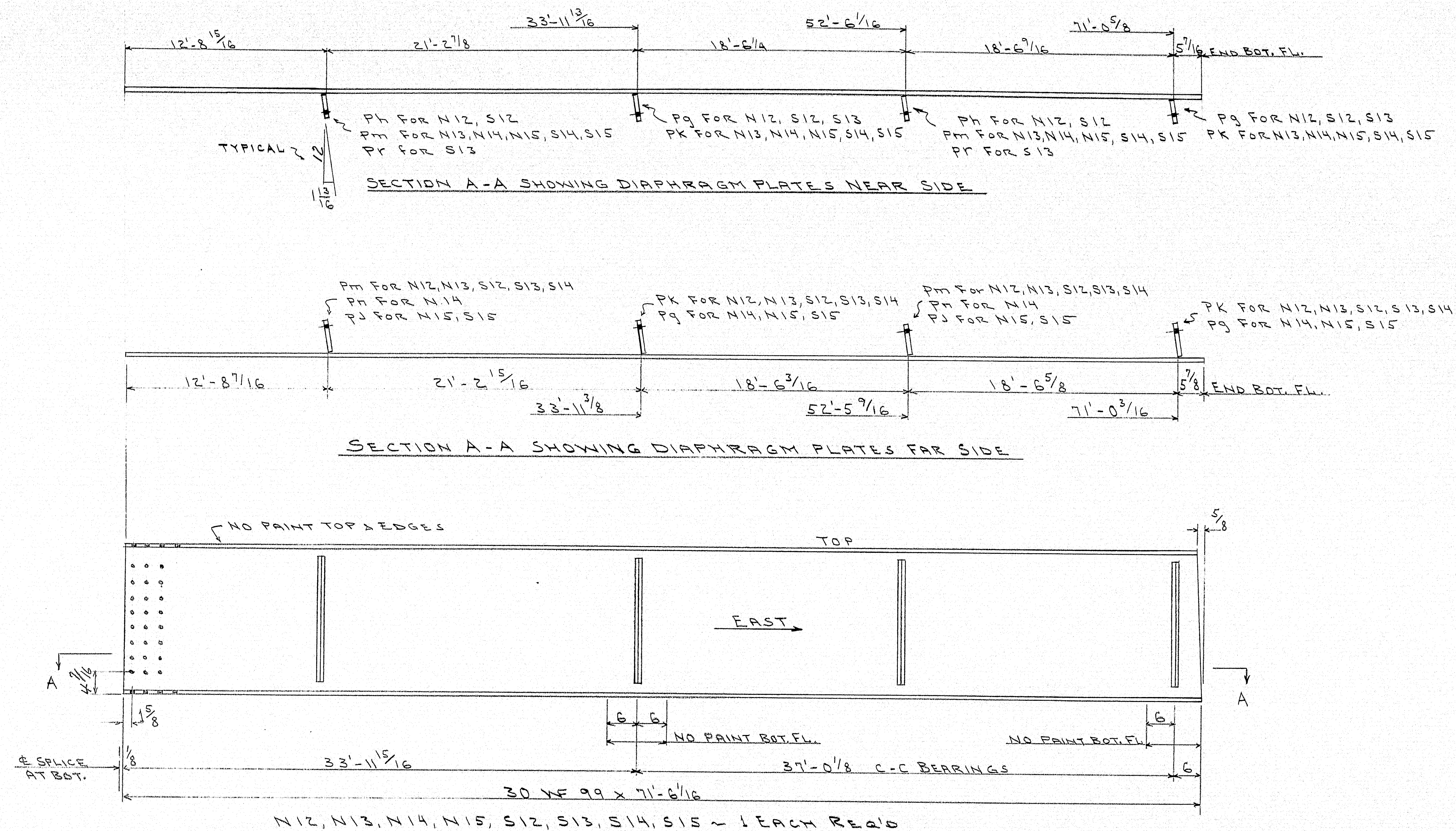
Bancroft & Martin Inc.
South Portland 7, Maine

INTERSTATE 95
OVER ROUTE 116
TOWN OF MEDWAY - ME.

CUSTOMER: CALLAHAN BROS. INC.
DESIGNER: MSHC - BRIDGE DIVISION

ORDER NO. DWG. NO. 65-18-S7

98-112



SHIP		BILL OF MATERIAL				DWG. NO. 65-18-S8
MARK	NO.	MARK	SHAPE	LENGTH	WT.	REMARKS
N12	1		30 WF 99	71' 6 1/16"		
N13	1		do	71' 6 1/16"		
N14	1		do	71' 6 1/16"		
N15	1		do	71' 6 1/16"		
S12	1		do	71' 6 1/16"		
S13	1		do	71' 6 1/16"		
S14	1		do	71' 6 1/16"		
S15	1		30 WF 99	71' 6 1/16"		
	12	PG	FB 6 x 3/8"	2	2	
	4	PH	do	2	2	
	4	PJ	do	2	2	
	20	PK	do	2	2	
	20	PM	do	2	2	
	2	PN	do	2	2	
	2	PR	do	2	2	
MATERIAL A36						
ITEM NO. 702-103A						

SHOP CONNECTIONS: WELDED ~ E70 ROD
 FIELD CONNECTIONS: 7/8" H.T. BOLTS
 HOLES: 15/16" Ø
 PAINT: RED LEAD PER MSHC SPECS.

PROJECT I-95-8(62)

STRINGER DETAILS

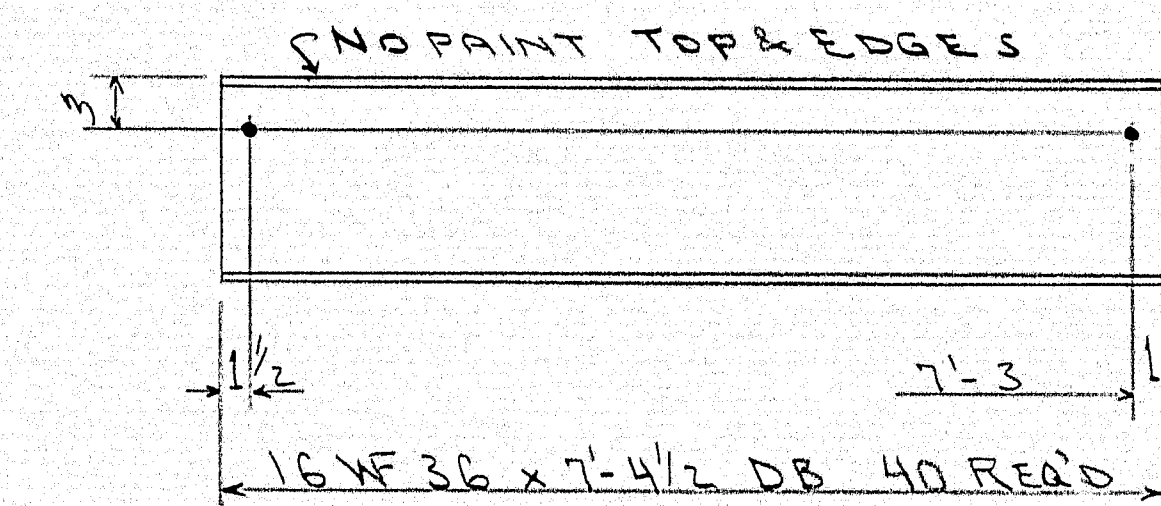
Bancroft & Martin Inc.
 South Portland 7, Maine

INTERSTATE 95
 OVER ROUTE 118
 TOWN OF MEDWAY, ME.

CUSTOMER CALLAHAN BROS., INC.
 DESIGNER M.S.H.C. BRIDGE DIVISION

DRAWN	5-6-65 CLE	ORDER NO.	DWG. NO. 65-18-S8
REVISION			
REVISION			
REVISION			

98-113

[illegible]

SHOP CONNECTIONS: NONE
FIELD CONNECTIONS: WELDED
HOLES: 1 5/16" Ø
PAINT: RED LEAD PER M.S.M.C. SPECS.

PROJECT 1-95-8 (62)
DIAPHRAGM DETAILS

Bancroft & Martin Inc.
South Portland 7, Maine

INTERSTATE 95
OVER ROUTE 116
TOWN OF MEDWAY ~ ME.

CUSTOMER CALLAHAN BROS. INC.
DESIGNER M.S.H.C. - BRIDGE DIVISION

ORDER NO. _____	DWG. NO. <u>65-18-S9</u>
-----------------	--------------------------

98-114

